

Longhorn beetles (Coleoptera: Cerambycidae) in Sarnena Sredna Gora Mountains

DENIS GRADINAROV¹, YANA PETROVA²

¹Faculty of Biology, Sofia University "St. Kliment Ohridski", 8 Dragan Tzankov Blvd., 1164 Sofia, Bulgaria; e-mail: dgradinarov@abv.bg

²National Genetic Laboratory, 2 Zdrave Str., Sofia, Bulgaria, e-mail: yanagradinarova@abv.bg

Abstract. The available data on the distribution of Cerambycidae species from Sarnena Gora Mts. are summarized. A total of 98 species of the family are reported. Of these 55 are new for the study area and for 82 species new locality records are presented. Findings of the species *Stenurella melanura samai* Rapuzzi, 1995, *Leiopus linnei* Wallin, Nylander & Kvamme, 2009, *Agapanthia osmanlis* Reiche et Saulcy, 1858, *Phytoecia millefolii* (Adams, 1817), *Pogonocherus hispidus* (Linnaeus, 1758) and *P. perroudi* Mulsant, 1839 are of particular importance in terms of their distribution in Bulgaria. The species *Rosalia alpina alpina* (Linnaeus, 1758) and *Morimus asper funereus* Mulsant, 1863 are included in the Directive 92/43/EEC on the conservation of natural habitats and wild fauna and flora.

Key words: Cerambycidae, Bulgaria, Sarnena Sredna Gora.

Introduction

The purpose of the present study is to conclude a list of the species from the family Cerambycidae (Coleoptera) from Sarnena Sredna Gora based on literature data, museum collections material and recently collected material. Data on the distribution of 43 species from the study area are available in the publications of Joakimov (1904), Nedelkov (1909a), Kantardjiewa-Minkowa (1932, 1934), Kantardjieva-Minkova (1957), Angelov (1964), Ganev (1985), Doychev & Georgiev (2004) and Georgiev (2020). Species records from neighboring localities (e.g. „Stara Zagora“, „Chirpan“, „Kazanlak“ and „Karlovo“) in the publications of Nedelkov (1905, 1909b), Netolitzky (1912), Heyrovský (1931), Minkova (1961), Ganev (1986), Dascălu & Fusu (2012), Doychev *et al.* (2017) are not included in the species list.

Material and Methods

Material for the present study was collected by the authors from April to July 2018 from localities in the higher Western part of Sarnena Sredna Gora (Bratan Region) mainly by direct collection from plants. Part of the specimens were collected by the authors with propylene glycol pitfall traps during the same period. Material collected by Dilian Georgiev from Hrishteni Vill. and the neighboring localities in the period 2016-2018, as well as material from pitfall traps, collected by Teodora Teofilova and Nikolay Kodzhabashev from Bratan Peak area and Chirpan Heights in the period 2019-2020 was also included. The specimens of Cerambycidae, preserved in the Coleoptera collection of the National Museum of Natural History (Sofia, Bulgaria) were revised.

The identification of the material was performed by the first author. The systematic of Cerambycidae, used in the preparation of the list, is according Danilevsky (2019a).

The collector's names abbreviations are as follows: DGr – Denis Gradinarov; YP – Yana Petrova; IGr – Iliya Gradinarov; DGe – Dilian Georgiev; TT – Teodora Teofilova; NK – Nikolay Kodzhabashev; ECh – Evgeni Chehlarov. The other abbreviations are as follows: ex.

CERAMBYCIDAE

– specimen/s; rev. – revised material by D. Gradinarov; p/f – collected on plants/flowers; BFUS – Zoological Collection of Sofia University “St. Kliment Ohridski”, Faculty of Biology, Sofia, Bulgaria; NMNHS – collection of National Museum of Natural History, Sofia, Bulgaria; * – the species is new for the studied area; # – the species is doubtful for the studied area.

Results

List of species

Cerambycidae Latreille, 1802

Prioninae Blanchard, 1845

Aegosomatini J. Thomson, 1861

Aegosoma scabricorne (Scopoli, 1763)

Turia Vill. (Joakimov 1904: 31, Kantardjiewa-Minkowa 1932: 81, as *Megopsis* (*Aegosoma*) *scabricornis* Scop.); rev.: Turia [in Cyrillic]/10.viii.1906/Col. D. Ioakimov, 1 ♂ (NMNHS).

New data: Hrishteni Vill., 42°27.212'N 25°42.315'E, 230 m a.s.l., yard of a house, 21.vi.2018, 1 ♂, on lamp, DGe leg. (BFUS).

Prionini Latreille, 1802

Prionus coriarius (Linnaeus, 1758)

Sredna Gora/S of Turia Vill. (Joakimov 1904: 31); Bratan Peak (Kantardjiewa-Minkowa 1932: 82).

New data: S Osetenovo Vill., bank of Turiyska Reka River, 42°32.717'N 25°02.533'E, 670 m a.s.l., riverside meadow with oak and willow, 07.vii. - 11.xi.2019, 2 ♂♂, pitfall trap, TT & NK leg. (BFUS).

Lepturinae Latreille, 1802

Lepturini Latreille, 1802

**Alosterna tabacicolor tabacicolor* (De Geer, 1775)

New data: 1 km SE Svezhen Vill., 42°29.377'N 25°02.429'E, 793 m a.s.l., meadows, 23.v.2018, 1 ♂, p/f, YP & DGr leg. (BFUS); 5 km SE Turia Vill., 42°31.786'N 25°11.763'E, 565 m a.s.l., riverside meadows and roadside verges, 24.v.2018, 3 ♂♂, 4 ♀♀, p/f, DGr & YP leg. (BFUS); Svezhen Vill., 42°30.292'N 25°01.540'E, 747 m a.s.l., riverside vegetation, 24.v.2018, 1 ♂, 1 ♀, p/f, DGr leg. (BFUS).

Anastrangalia dubia dubia (Scopoli, 1763)

Sredna Gora/S of Turia Vill. (Joakimov 1904: 32, as *Leptura dubia* L.).

New data: 1 km SW Turia Vill., 42°33.862'N 25°10.386'E, 480 m a.s.l., meadows and roadside verges, 24.v.2018, 1 ♀, p/f, DGr & YP leg. (BFUS); NW Svezhen Vill., 42°30.649'N 25°00.641'E, 749 m a.s.l., edge of a beech-oak forest, 25.v.2018, 1 ♀, p/f, YP leg. (BFUS).

**Anoplodera (Anoplodera) sexguttata* (Fabricius, 1775)

New data: 2 km NE Mrachenik Vill., 42°30.260'N 24°59.074'E, 717 m a.s.l., roadside meadows and shrubs, 24.v.2018, 1 ♂, p/f, DGr leg. (BFUS); Beter Peak area, N of Zmeyovo Vill., 42°30.570'N 25°37.493'E 705 m a.s.l., dirt road, mixed forest with glades, 28.v.2018, 1 ♀, DGe leg. (BFUS).

**Leptura (Leptura) quadrifasciata quadrifasciata* Linnaeus, 1758

New data: Svezhen Vill., 42°30.292'N 25°01.540'E, 747 m a.s.l., riverside vegetation, 23.vi.2018, 1 ♂, p/f, DGr leg. (BFUS).

CERAMBYCIDAE

****Pachytodes cerambyciformis* (Schrank, 1781)**

New data: 1 km SE Svezhen Vill., 42°29.423'N 25°02.509'E, 810 m a.s.l., meadows, 23.v.2018, 1 ♂, p/f, DGr leg. (BFUS); 2 km NE Mrachenik Vill., 42°30.260'N 24°59.074'E, 717 m a.s.l., roadside meadows and shrubs, 24.v.2018, 1 ♂, 1 ♀, p/f, YP & DGr leg. (BFUS) (**Plate I, 1**); Svezhen Vill., 42°30.292'N 25°01.540'E, 747 m a.s.l., riverside vegetation, 24.v.2018, 1 ♀, p/f, DGr leg. (BFUS); Beter Peak area, N of Zmeyovo Vill., 42°30.570'N 25°37.493'E, 705 m a.s.l., dirt road, mixed forest with glades, 28.v.2018, 1 ♂, DGe leg. (BFUS); Svezhen Vill., 42°30.292'N 25°01.540'E, 747 m a.s.l., riverside vegetation, 23.vi.2018, 1 ♂, p/f, DGr leg. (BFUS); near Kavakliyka Chalet, 42°29.123'N 25°13.411'E, 975 m a.s.l., meadows, 24.vi.2018, 3 ♂♂, 1 ♀, p/f, DGr & YP leg. (BFUS).

****Pachytodes erraticus* (Dalman, 1817)**

Sredna Gora/S of Turia Vill. (Joakimov 1904: 31, as *Pachyta erraticus* Dalm.); Buzovgrad Vill. (Ganev 1985: 149, as *Judolia erraticus* Dal.).

New data: 5 km SW Chehlare Vill., 42°24.707'N 25°06.158'E, 431 m a.s.l., roadside vegetation, 23.vi.2018, 4 ♂♂, 1 ♀, p/f, YP & DGr leg. (BFUS); 1 km NW Babek Vill., 42°27.184'N 25°04.127'E, 469 m a.s.l., meadows and roadside verges, 23.vi.2018, 12 ♂♂, 5 ♀♀, p/f, DGr & YP leg. (BFUS); 3,5 km NW Babek Vill., 42°28.461'N 25°03.852'E, 696 m a.s.l., roadside vegetation, cutting area, 23.vi.2018, 2 ♂♂, 2 ♀♀, p/f, YP leg. (BFUS); 2 km NE Mrachenik Vill., 42°30.260'N 24°59.074'E, 717 m a.s.l., roadside meadows and shrubs, 23.vi.2018, 7 ♂♂, 7 ♀♀, p/f, YP & DGr leg. (BFUS) (**Plate I, 2**); NW Svezhen Vill., 42°30.649'N 25°00.641'E, 749 m a.s.l., meadows and shrubs next to a beech-oak forest, 23.vi.2018, 2 ♂♂, 1 ♀, p/f, YP leg. (BFUS); 3 km SE Svezhen Vill., 42°28.875'N 25°03.264'E, 763 m a.s.l., meadows and roadside verges, 23.vi.2018 - 24.vi.2018, 3 ♂♂, 9 ♀♀, p/f, DGr & YP leg. (BFUS); 1 km NW Dolno Novo Selo Vill., 42°25.911'N 25°13.826'E, 435 m a.s.l., meadows, 24.vi.2018, 1 ♂, p/f, DGr leg. (BFUS); 1 km SW Turia Vill., 42°33.829'N 25°10.442'E, 488 m a.s.l., hillside, meadows, 24.vi.2018, 2 ♂♂, p/f, DGr & YP leg. (BFUS); the same locality and date, but 1 ♂, 1 ♀, p/f, YP & leg. (BFUS); 5 km SE Turia Vill., 42°31.786'N 25°11.763'E, 565 m a.s.l., riverside meadows and roadside verges, 24.vi.2018, 1 ♀, p/f, DGr & YP leg. (BFUS); 3 km NW Gorno Novo Selo Vill., near Kaletto Place, 42°28.430'N 25°13.294'E, 808 m a.s.l., meadows and roadside verges, 24.vi.2018, 13 ♂♂, 7 ♀♀, p/f, YP leg. (BFUS); 1 km SE Svezhen Vill., 42°29.242'N 25°02.469'E, 819 m a.s.l., meadows and roadside verges, 24.vi.2018, 1 ♂, 2 ♀♀, p/f, DGr & YP leg. (BFUS).

****Pseudovadonia livida setosa* Danilevsky, 2013**

New data: SE Beguntsi Vill., near Byala Reka Riv., 42°32.601'N 24°53.247'E, 321 m a.s.l., riverside meadows, 23.v.2018, 3 ♂♂, 1 ♀, p/f, DGr & YP leg. (BFUS); near Stara Zagora, N of Dabrava quarter, 42°27.505'N 25°35.617'E, 520 m a.s.l., oak-hornbeam forest, 23.v.2018, 1 ♂, DGe leg. (BFUS); near Zelenikovo Vill., 42°24.969'N 25°04.815'E, 330 m a.s.l., roadside verges, 24.v.2018, 2 ♂♂, p/f, YP leg. (BFUS); 1 km SW Turia Vill., 42°33.862'N 25°10.386'E, 480 m a.s.l., meadows and roadside verges, 24.v.2018, 1 ♂, 2 ♀♀, p/f, YP & DGr leg. (BFUS); 1,5 km NW Babek Vill., 42°27.384'N 25°04.172'E, 512 m a.s.l., meadows, 24.v.2018, 14 ♂♂, 11 ♀♀, p/f, DGr & IGr leg. (BFUS); the same locality, but 23.vi.2018, 1 ♀, p/f, DGr leg. (BFUS); 2 km NE Mrachenik Vill., 42°30.260'N 24°59.074'E, 717 m a.s.l., roadside meadows and shrubs, 24.v.2018, 1 ♂, 1 ♀, p/f, YP & DGr leg. (BFUS); the same locality and date, but 1 ♂, p/f, YP & IGr leg. (BFUS); 3 km NE Mrachenik Vill., 42°30.102'N 24°59.900'E, 805 m a.s.l., roadside verges and an oak forest, 24.v.2018, 1 ♂, 2 ♀♀, p/f, YP leg. (BFUS); W of Stara Zagora, 42°24.547'N 25°33.442'E, 390 m a.s.l., meadows and shrubs, 04.vi.2018, 1 ♂, DGe leg. (BFUS); 1 km NW Babek Vill., 42°27.184'N 25°04.127'E, 469 m a.s.l., meadows and roadside verges, 23.vi.2018, 3 ♂♂, 2 ♀♀, p/f, DGr & YP leg. (BFUS); 1 km SE Gorno Novo Selo Vill., 42°26.532'N 25°13.573'E, 468 m a.s.l.,

CERAMBYCIDAE

roadside vegetation, 24.vi.2018, 4 ♂♂, 1 ♀, p/f, YP leg. (BFUS); near Rozovets Vill., bank of Stara Reka Riv., 42°27.685'N 25°07.232'E, 469 m a.s.l., riverside vegetation, 24.vi.2018, 1 ♂, p/f, DGr leg. (BFUS); near Kavakliyka Chalet, 42°29.123'N 25°13.411'E, 975 m a.s.l., meadows, 24.vi.2018, 1 ♀, p/f, DGr & YP leg. (BFUS).

***Rutpela maculata maculata* (Poda von Neuhaus, 1761)**

Sredna Gora/S of Turia Vill. (Joakimov 1904: 32, as *Strangalia maculata* Poda); Turia Vill. (Kantardjiewa-Minkowa 1932: 91, as *Strangalia maculata* Poda); rev.: Turia Vill. [in Cyrillic]/1919/ex collectio/D. Joakimov/Bulgarien, 1 ♀ (NMNHS).

New data: Beter Peak area, N of Zmeyovo Vill., 42°30.570'N 25°37.493'E, 705 m a.s.l., dirt road, mixed forest with glades, 28.v.2018, 1 ♀, DGe leg. (BFUS); Beter Peak, 42°30.687'N 25°37.773'E, 809 m a.s.l., deciduous forest with *Quercus* sp., *Carpinus betulus* L., *Acer* sp., rocks and forest glades with *Paeonia* sp., 28.v.2018, 1 ♀, DGe leg. (BFUS); on the road to Moruley Peak, 42°31.462'N 25°45.530'E, 620 m a.s.l., oak-hornbeam forest, forest glades, 07.vi.2018, 1 ♂, DGe leg. (BFUS); 3,5 km NW Babek Vill., 42°28.461'N 25°03.852'E, 696 m a.s.l., roadside vegetation, cutting area, 23.vi.2018, 2 ♂♂, 3 ♀♀, p/f, YP leg. (BFUS); 3 km SE Svezhen Vill., 42°28.875'N 25°03.264'E, 763 m a.s.l., meadows and roadside verges, 23.vi.2018 - 24.vi.2018, 2 ♂♂, 3 ♀♀, p/f, DGr & YP leg. (BFUS); 5 km SE Turia Vill., 42°31.786'N 25°11.763'E, 565 m a.s.l., riverside meadows and roadside verges, 24.vi.2018, 1 ♂, p/f, DGr & YP leg. (BFUS); near Kavakliyka Chalet, 42°29.123'N 25°13.411'E, 975 m a.s.l., meadows, 24.vi.2018, 3 ♂♂, p/f, DGr & YP leg. (BFUS); the same locality, but 22.vii.2018, 1 ♂, 1 ♀, p/f, DGr & YP leg. (BFUS); 3 km NW Gorno Novo Selo Vill., near Kaleto Place, 42°28.430'N 25°13.294'E, 808 m a.s.l., meadows and roadside verges, 22.vii.2018, 1 ♂, p/f, YP leg. (BFUS).

****Stenurella (Nigrostenurella) nigra nigra* (Linnaeus, 1758)**

New data: N of Kolena Vill., 42°29.340'N 25°43.220'E, 290 m a.s.l., riverine forest, forest glades, 23.v.2017, 1 ♂, DGe leg. (BFUS); near Starozagorski Bani Vill., 42°26.900'N 25°29.562'E, 390 m a.s.l., high grass vegetation, 10.v.2018, 1 ♂, DGe leg. (BFUS); S of Shanovo Vill., 42°31.867'N 25°38.698'E, 434 m a.s.l., oak-hornbeam forest, 15.v.2018, 1 ♀, DGe leg. (BFUS); 1 km SE Svezhen Vill., 42°29.377'N 25°02.429'E, 793 m a.s.l., meadows, 23.v.2018, 1 ♂, 1 ♀, p/f, YP & DGr leg. (BFUS); 3 km S Turia Vill., 42°32.601'N 25°10.937'E, 538 m a.s.l., hillside, meadows, roadside verges, 24.v.2018, 1 ♀, p/f, DGr & YP leg. (BFUS); 2 km NE Mrachenik Vill., 42°30.260'N 24°59.074'E, 717 m a.s.l., roadside meadows and shrubs, 24.v.2018, 8 ♂♂, p/f, DGr, YP & IGr leg. (BFUS) (**Plate I, 3**); Svezhen Vill., 42°30.292'N 25°01.540'E, 747 m a.s.l., riverside vegetation, 24.v.2018, 1 ♂, p/f, DGr leg. (BFUS); 3 km NE Mrachenik Vill., 42°30.102'N 24°59.900'E, 805 m a.s.l., roadside verges and an oak forest, 24.v.2018, 2 ♂♂, p/f, YP leg. (BFUS); NW Svezhen Vill., 42°30.649'N 25°00.641'E, 749 m a.s.l., edge of a beech-oak forest, 25.v.2018, 1 ♀, p/f, YP leg. (BFUS); on the road to Moruley Peak, 42°31.462'N 25°45.530'E, 620 m a.s.l., oak-hornbeam forest, forest glades, 07.vi.2018, 1 ♀, DGe leg. (BFUS); Svezhen Vill., 42°30.292'N 25°01.540'E, 747 m a.s.l., riverside vegetation, 23.vi.2018, 1 ♀, p/f, DGr leg. (BFUS).

***Stenurella (Priscostenurella) bifasciata bifasciata* (O. F. Müller, 1776)**

Sredna Gora/S of Turia Vill. (Joakimov 1904: 32, as *Leptura bifasciata* Mull.).

New data: SE Beguntsi Vill., near Byala Reka Riv., 42°32.601'N 24°53.247'E, 321 m a.s.l., riverside meadows, 23.v.2018, 5 ♂♂, 4 ♀♀, p/f, DGr & YP leg. (BFUS); 5 km SW Chehlaré Vill., 42°24.708'N 25°06.145'E, 429 m a.s.l., roadside vegetation, 24.v.2018, 1 ♀, p/f, YP leg. (BFUS); 1 km SW Turia Vill., 42°33.862'N 25°10.386'E, 480 m a.s.l., meadows and roadside verges, 24.v.2018, 1 ♀, p/f, DGr & YP leg. (BFUS); 2 km NE Mrachenik Vill., 42°30.260'N 24°59.074'E, 717 m a.s.l., roadside meadows and shrubs, 24.v.2018, 5 ♂♂, 5

CERAMBYCIDAE

♀♀, p/f, YP & DGr leg. (BFUS); NW Svezhen Vill., 42°30.616'N 25°00.680'E, 746 m a.s.l., edge of a beech-oak forest, 25.v. - 23.vi.2018, 1 ♀, pitfall trap, DGr & YP leg. (BFUS); 5 km SW Chehlar Vill., 42°24.707'N 25°06.158'E, 431 m a.s.l., roadside vegetation, 23.vi.2018, 1 ♀, p/f, YP & DGr leg. (BFUS); 4,5 km SW Chehlar Vill., 42°24.744'N 25°06.337'E, 450 m a.s.l., dirt road, meadows, 23.vi.2018, 1 ♂, p/f, DGr & YP leg. (BFUS); 3,5 km NW Babek Vill., 42°28.461'N 25°03.852'E, 696 m a.s.l., roadside vegetation, cutting area, 23.vi.2018, 2 ♀♀, p/f, YP & DGr leg. (BFUS); 3 km SE Svezhen Vill., 42°28.875'N 25°03.264'E, 763 m a.s.l., meadows and roadside verges, 23.vi.2018 - 24.vi.2018, 1 ♂, 2 ♀♀, p/f, DGr & YP leg. (BFUS); 1 km SW Turia Vill., 42°33.829'N 25°10.442'E, 488 m a.s.l., hillside, meadows, 24.vi.2018, 6 ♂♂, 10 ♀♀, p/f, DGr, YP & IGr leg. (BFUS) (**Plate I, 4**); W of Yagoda Vill., 42°32.347'N 25°33.578'E, 315 m a.s.l., streamside meadows with shrub and tree vegetation, 02.vii.2018, 1 ♂, DGe leg. (BFUS); Chirpan heights, NW Veren Vill., 42°21.317'N 25°10.783'E, 353 m a.s.l., abandoned pasture with *Paliurus spina-christi* Mill. and *Opuntia* sp., 23.iii. - 08.vii.2019, 1 ♀, pitfall trap, TT & NK leg. (BFUS).

Notes: The contact zone between two of the subspecies of *S. bifasciata* – the nominative *S. bifasciata* ssp. *bifasciata* (O. F. Müller, 1776) and the southern *S. bifasciata* ssp. *intermedia* Holzschuh, 2006 passes through the northern part of the Balkan Peninsula (Danilevsky 2014). Both subspecies have been reported from Bulgaria – the nominative subspecies from Sofia environs and *S. bifasciata* ssp. *intermedia* from the south parts of the country (Danilevsky 2011, 2014, Georgiev *et al.* 2019). All examined females (28 specimens) from Sarnena Gora have the characteristic for the nominative subspecies well developed black elytral design.

****Stenurella (Priscostenurella) septempunctata septempunctata* (Fabricius, 1792)**

New data: SE Beguntsi Vill., near Byala Reka Riv., 42°32.601'N 24°53.247'E, 321 m a.s.l., riverside meadows, 23.v.2018, 2 ♂♂, 1 ♀, p/f, DGr & YP leg. (BFUS); 2,5 km SE Domlyan Vill., 42°30.809'N 24°55.328'E, 450 m a.s.l., roadside verges, 23.v.2018, 2 ♂♂, 2 ♀♀, p/f, YP leg. (BFUS); near Zelenikovo Vill., 42°24.969'N 25°04.815'E, 330 m a.s.l., roadside verges, 24.v.2018, 1 ♂, p/f, YP leg. (BFUS); 2 km NE Mrachenik Vill., 42°30.260'N 24°59.074'E, 717 m a.s.l., roadside meadows and shrubs, 24.v.2018, 4 ♂♂, 4 ♀♀, p/f, YP leg. (BFUS) (**Plate I, 5**); 3 km NE Mrachenik Vill., 42°30.102'N 24°59.900'E, 805 m a.s.l., roadside verges and an oak forest, 24.v.2018, 1 ♀, p/f, YP leg. (BFUS); Beter Peak area, N of Zmeyovo Vill., 42°30.570'N 25°37.493'E, 705 m a.s.l., dirt road, mixed forest with glades, 28.v.2018, 2 ♂♂, DGe leg. (BFUS); W of Stara Zagora, 42°24.547'N 25°33.442'E, 390 m a.s.l., meadows and shrubs, 04.vi.2018, 1 ♀, DGe leg. (BFUS); 5 km SW Chehlar Vill., 42°24.707'N 25°06.158'E, 431 m a.s.l., roadside vegetation, 23.vi.2018, 3 ♂♂, p/f, YP & DGr leg. (BFUS); 1 km NW Babek Vill., 42°27.184'N 25°04.127'E, 469 m a.s.l., meadows and roadside verges, 23.vi.2018, 1 ♂, 5 ♀♀, p/f, DGr & YP leg. (BFUS); 3,5 km NW Babek Vill., 42°28.461'N 25°03.852'E, 696 m a.s.l., roadside vegetation, cutting area, 23.vi.2018, 2 ♀♀, p/f, YP leg. (BFUS); Svezhen Vill., 42°30.292'N 25°01.540'E, 747 m a.s.l., riverside vegetation, 23.vi.2018, 2 ♂♂, 1 ♀, p/f, DGr leg. (BFUS); NW Svezhen Vill., 42°30.649'N 25°00.641'E, 749 m a.s.l., meadows next to a beech-oak forest, 23.vi.2018, 2 ♂♂, 2 ♀♀, p/f, YP leg. (BFUS); 1 km NW Dolno Novo Selo Vill., 42°25.911'N 25°13.826'E, 435 m a.s.l., meadows, 24.vi.2018, 1 ♂, p/f, DGr leg. (BFUS); 1 km SW Turia Vill., 42°33.829'N 25°10.442'E, 488 m a.s.l., hillside, 24.vi.2018, 3 ♂♂, p/f, DGr & YP leg. (BFUS); 3 km NW Gorno Novo Selo Vill., near Kaleto Place, 42°28.430'N 25°13.294'E, 808 m a.s.l., meadows and roadside verges, 24.vi.2018, 1 ♀, p/f, YP leg. (BFUS); 1 km SE Svezhen Vill., 42°29.242'N 25°02.469'E, 819 m a.s.l., meadows and roadside verges, 24.vi.2018, 1 ♂, p/f, DGr & YP leg. (BFUS); near Kavakliyka Chalet, 42°29.123'N 25°13.411'E, 975 m a.s.l., meadows, 24.vi.2018, 1 ♂, p/f, DGr & YP leg. (BFUS).

CERAMBYCIDAE

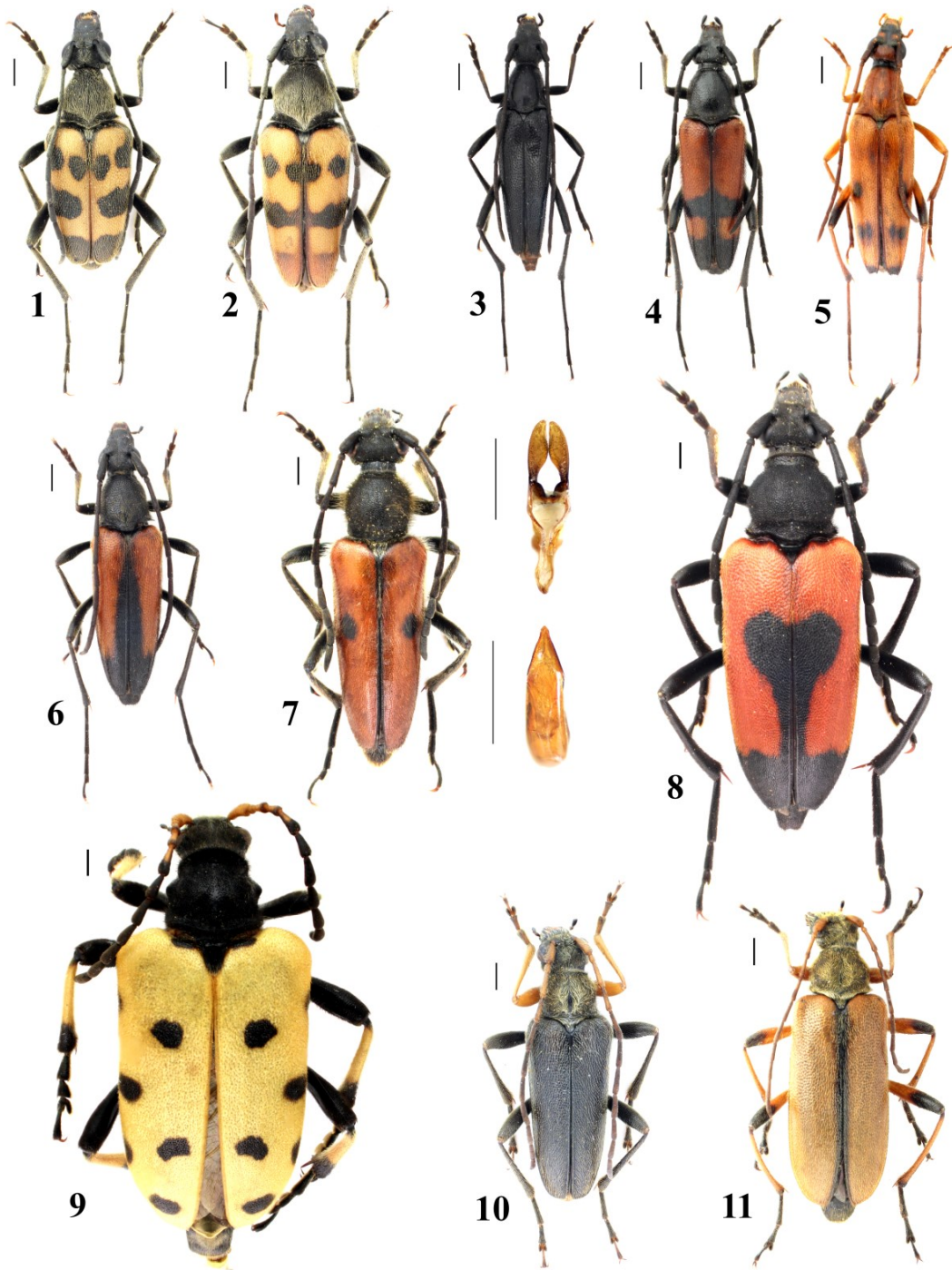


Plate I. 1 – *Pachytodes cerambyciformis*, 2 km NE Mrachenik Vill., 24.v.2018, male; 2 – *P. erraticus*, the same locality, 23.vi.2018, male; 3 – *Stenurella nigra nigra*, the same locality, 24.v.2018, male; 4 – *S. bifasciata bifasciata*, 1 km SW Turia Vill., 24.vi.2018, female; 5 – *S. septempunctata septempunctata*, 2 km NE Mrachenik Vill., 24.v.2018, female; 6 – *S. melanura samai*, 3 km SE Svezhen Vill., 23.vi.2018, female; 7 – *Vadonia unipunctata unipunctata*, 3 km NE Mrachenik Vill., 24.v.2018, male; 8 – *Stictoleptura cordigera cordigera*, 3 km NW Gorno Novo Selo Vill., 24.vi.2018, female; 9 – *Brachyta balcanica*, Beter Peak, 28.v.2018, female; 10 – *Cortodera flavimana flavimana*, 1 km SE Svezhen Vill., 23.v.2018, male; 11 – *Cortodera humeralis humeralis*, NW Svezhen Vill., 23.iv.2018, female. Scale bars: 1 mm.

***Stenurella (Stenurella) melanura samai* Rapuzzi, 1995**

Sredna Gora/S of Turia Vill. (Joakimov 1904: 32, as *Strangalia melanura* L.).

New data: on the road to Moruley Peak, 42°31.462'N 25°45.530'E, 620 m a.s.l., oak-hornbeam forest, forest glades, 07.vi.2018, 1 ♀, DGe leg. (BFUS); 5 km SW Chehlaré Vill., 42°24.707'N 25°06.158'E, 431 m a.s.l., roadside vegetation, 23.vi.2018, 3 ♂♂, 1 ♀, p/f, YP & DGr leg. (BFUS); 1 km NW Babek Vill., 42°27.184'N 25°04.127'E, 469 m a.s.l., meadows and roadside verges, 23.vi.2018, 3 ♂♂, 3 ♀♀, p/f, DGr & YP leg. (BFUS); 3,5 km NW Babek Vill., 42°28.461'N 25°03.852'E, 696 m a.s.l., roadside vegetation, cutting area, 23.vi.2018, 1 ♂, 3 ♀♀, p/f, YP leg. (BFUS); 2 km NE Mrachenik Vill., 42°30.260'N 24°59.074'E, 717 m a.s.l., roadside meadows and shrubs, 23.vi.2018, 2 ♂♂, 3 ♀♀, p/f, YP leg. (BFUS); NW Svezhen Vill., 42°30.649'N 25°00.641'E, 749 m a.s.l., meadows and shrubs next to a beech-oak forest, 23.vi.2018, 1 ♂, 1 ♀, p/f, YP leg. (BFUS); 3 km SE Svezhen Vill., 42°28.875'N 25°03.264'E, 763 m a.s.l., meadows and roadside verges, 23.vi.2018 - 24.vi.2018, 5 ♂♂, 7 ♀♀, p/f, DGr & YP leg. (BFUS) (**Plate I, 6**); near Rozovets Vill., bank of Stara Reka Riv., 42°27.685'N 25°07.232'E, 469 m a.s.l., riverside vegetation, 24.vi.2018, 1 ♂, p/f, DGr leg. (BFUS); 1 km SW Turia Vill., 42°33.829'N 25°10.442'E, 488 m a.s.l., hillside, meadows, 24.vi.2018, 2 ♂♂, 1 ♀, p/f, DGr & YP leg. (BFUS); the same locality and date, but 1 ♂, 2 ♀♀, p/f, YP & IGr leg. (BFUS); 5 km SE Turia Vill., 42°31.786'N 25°11.763'E, 565 m a.s.l., riverside meadows and roadside verges, 24.vi.2018, 4 ♂♂, 6 ♀♀, p/f, DGr & YP leg. (BFUS); 3 km NW Gorno Novo Selo Vill., near Kaletó Place, 42°28.451'N 25°13.324'E, 800 m a.s.l., meadows and roadside verges, 24.vi.2018, 1 ♂, p/f, DGr leg. (BFUS); the same data, but 42°28.430'N 25°13.294'E, 808 m a.s.l., 24.vi.2018, 13 ♂♂, 5 ♀♀, p/f, YP leg. (BFUS); the same locality, but 22.vii.2018, 1 ♂, 1 ♀, p/f, YP leg. (BFUS); near Kavakliyka Chalet, 42°29.123'N 25°13.411'E, 975 m a.s.l., meadows, 24.vi.2018, 2 ♂♂, 2 ♀♀, p/f, DGr & YP leg. (BFUS); S Osetenovo Vill., bank of Turiyska Reka River, 42°32.717'N 25°02.533'E, 670 m a.s.l., riverside meadow with oak, oak and willow, 07.vii. - 11.xi.2019, 1 ♀, pitfall trap, TT & NK leg. (BFUS).

Notes: In Bulgaria the subspecies is known from a number of localities from Strandzha Mts. (Rapuzzi & Georgiev 2007, Georgiev *et al.* 2018). All examined specimens (40 males and 37 females) from Sarnena Gora have distinct gold pubescence on the elytra and pronotum, which according to Rapuzzi (1995) is characteristic of *S. melanura samai*. This indicated that the populations of the species in the study area belong to the latter subspecies.

****Stictoleptura (Maculileptura) pallens* (Brullé, 1832)**

New data: Beter Peak area, N of Zmeyovo Vill., 42°30.570'N 25°37.493'E, 705 m a.s.l., dirt road, mixed forest with glades, 28.v.2018, 1 ♂, DGe leg. (BFUS).

***Stictoleptura (Melanoleptura) scutellata scutellata* (Fabricius, 1781)**

Sredna Gora/S of Turia Vill. (Joakimov 1904: 32, as *Leptura scutellata* Fabr.); Turia Vill. and Bratan Peak (Kantardjiewa-Minkowa 1932: 90, as *Leptura scutellata* F.); rev.: Turia [in Cyrillic]/19.viii.1897/Col. D. Ioakimov, 1 ♀ (NMNHS); Turia vill. [in Cyrillic]/23.viii.1920/D. Ioakimov, 1 ♀ (NMNHS).

New data: Moruley Peak, 42°32.428'N 25°45.435'E, 895 m a.s.l., oak forest, herbaceous vegetation, 07.vi.2018, 1 ♂, DGe leg. (BFUS); near Kavakliyka Chalet, 42°29.123'N 25°13.411'E, 975 m a.s.l., meadows, 24.vi.2018, 2 ♂♂, p/f, DGr & YP leg. (BFUS); 2 km NE Mrachenik Vill., 42°30.260'N 24°59.074'E, 717 m a.s.l., roadside meadows and shrubs, 21.vii.2018, 1 ♂, p/f, DGr & YP leg. (BFUS); 3 km NW Gorno Novo Selo Vill.,

CERAMBYCIDAE

near Kaleto Place, 42°28.430'N 25°13.294'E, 808 m a.s.l., meadows and roadside verges, 22.vii.2018, 1 ♂, 2 ♀♀, p/f, YP leg. (BFUS).

****Stictoleptura (Paracorymbia) fulva* (De Geer, 1775)**

New data: 1 km NW Babek Vill., 42°27.184'N 25°04.127'E, 469 m a.s.l., meadows and roadside verges, 23.vi.2018, 1 ♀, p/f, DGr & YP leg. (BFUS); 3,5 km NW Babek Vill., 42°28.461'N 25°03.852'E, 696 m a.s.l., roadside vegetation, cutting area, 23.vi.2018, 1 ♂, p/f, YP leg. (BFUS); 3 km SE Svezhen Vill., 42°28.875'N 25°03.264'E, 763 m a.s.l., meadows and roadside verges, 23.vi.2018 - 24.vi.2018, 1 ♂, 3 ♀♀, p/f, DGr & YP leg. (BFUS); 1 km NW Dolno Novo Selo Vill., 42°25.911'N 25°13.826'E, 435 m a.s.l., meadows, 24.vi.2018, 1 ♂, 1 ♀, p/f, DGr leg. (BFUS); near Rozovets Vill., bank of Stara Reka Riv., 42°27.685'N 25°07.232'E, 469 m a.s.l., riverside vegetation, 24.vi.2018, 1 ♀, p/f, DGr leg. (BFUS); 1 km SW Turia Vill., 42°33.829'N 25°10.442'E, 488 m a.s.l., hillside, meadows, 24.vi.2018, 3 ♂♂, 3 ♀♀, p/f, DGr & YP leg. (BFUS); the same locality and date, but 3 ♂♂, 3 ♀♀, p/f, YP & IGr leg. (BFUS); 4,5 km SW Chehlaré Vill., 42°24.744'N 25°06.337'E, 450 m a.s.l., dirt road, meadows, 21.vii.2018, 1 ♂, p/f, YP leg. (BFUS); 2 km NE Mrachenik Vill., 42°30.260'N 24°59.074'E, 717 m a.s.l., roadside meadows and shrubs, 21.vii.2018, 1 ♂, p/f, DGr & YP leg. (BFUS); 3 km NE Mrachenik Vill., 42°30.123'N 24°59.887'E, 809 m a.s.l., meadows, 21.vii.2018, 1 ♂, 1 ♀, p/f, YP leg. (BFUS).

****Stictoleptura (Stictoleptura) cordigera cordigera* (Füesslins, 1775)**

New data: Hrishteni Vill., 42°27.212'N 25°42.315'E, 230 m a.s.l., yard of a house, 9.vi.2018, 1 ♂, on flowers of *Allium cepa* L., DGe leg. (BFUS); near Babek Vill., 42°26.225'N 25°04.847'E, 385 m a.s.l., roadside verges, 23.vi.2018, 1 ♂, p/f, DGr & YP leg. (BFUS); 4,5 km SW Chehlaré Vill., 42°24.744'N 25°06.337'E, 450 m a.s.l., dirt road, meadows, 23.vi.2018, 1 ♂, p/f, DGr & YP leg. (BFUS); the same locality, but 21.vii.2018, 1 ♂, p/f, YP leg. (BFUS); 3 km SE Svezhen Vill., 42°28.875'N 25°03.264'E, 763 m a.s.l., meadows and roadside verges, 23.vi.2018 - 24.vi.2018, 1 ♀, p/f, DGr & YP leg. (BFUS); 3 km NW Gorno Novo Selo Vill., near Kaleto Place, 42°28.430'N 25°13.294'E, 808 m a.s.l., meadows and roadside verges, 24.vi.2018, 1 ♀, p/f, YP leg. (BFUS) (**Plate I, 8**).

***Strangalia attenuata* (Linnaeus, 1758)**

Turia Vill. (Kantardjieva-Minkova 1957: 546, as *Strangalina attenuata* L.)

New data: 5 km SW Chehlaré Vill., 42°24.707'N 25°06.158'E, 431 m a.s.l., roadside vegetation, 23.vi.2018, 3 ♀♀, p/f, YP & DGr leg. (BFUS); the same locality, but 21.vii.2018, 1 ♂, p/f, DGr & YP leg. (BFUS); 1 km NW Babek Vill., 42°27.184'N 25°04.127'E, 469 m a.s.l., meadows and roadside verges, 23.vi.2018, 6 ♂♂, 5 ♀♀, p/f, DGr & YP leg. (BFUS); 3,5 km NW Babek Vill., 42°28.461'N 25°03.852'E, 696 m a.s.l., roadside vegetation, cutting area, 23.vi.2018, 4 ♂♂, 2 ♀♀, p/f, YP leg. (BFUS); 1 km NW Dolno Novo Selo Vill., 42°25.911'N 25°13.826'E, 435 m a.s.l., meadows, 24.vi.2018, 1 ♂, p/f, DGr leg. (BFUS); near Rozovets Vill., bank of Stara Reka Riv., 42°27.685'N 25°07.232'E, 469 m a.s.l., riverside vegetation, 24.vi.2018, 1 ♂, p/f, DGr leg. (BFUS); near Kavakliyka Chalet, 42°29.123'N 25°13.411'E, 975 m a.s.l., meadows, 22.vii.2018, 1 ♂, p/f, DGr & YP leg. (BFUS).

****Vadonia unipunctata unipunctata* (Fabricius, 1787)**

New data: near Stara Zagora, N of Dabrava quarter, 42°27.505'N 25°35.617'E, 520 m a.s.l., oak-hornbeam forest, 23.v.2018, 1 ♂, DGe leg. (BFUS); 1 km SE Svezhen Vill., 42°29.377'N 25°02.429'E, 793 m a.s.l., meadows, 23.v.2018, 2 ♂♂, 1 ♀, p/f, YP, IGr & DGr leg. (BFUS); the same data, but 42°29.423'N 25°02.509'E, 810 m a.s.l., 23.v.2018, 1 ♀, p/f, DGr leg. (BFUS); 1,5 km NW Babek Vill., 42°27.384'N 25°04.172'E, 512 m a.s.l., meadows, 24.v.2018, 1 ♀, p/f, DGr leg. (BFUS); 3 km NE Mrachenik Vill., 42°30.102'N 24°59.900'E,

CERAMBYCIDAE

805 m a.s.l., roadside verges and an oak forest, 24.v.2018, 2 ♂♂, 1 ♀, p/f, YP leg. (BFUS) (**Plate I, 7**); NW Svezhen Vill., 42°30.649'N 25°00.641'E, 749 m a.s.l., meadows and shrubs next to a beech-oak forest, 23.vi.2018, 1 ♂, p/f, YP leg. (BFUS).

Rhagiini Kirby, 1837

****Brachyta (Fasciobrachyta) balcanica* Hampe, 1870**

New data: Beter Peak, 42°30.687'N 25°37.773'E, 809 m a.s.l., deciduous forest with *Quercus* sp., *Carpinus betulus* L., *Acer* sp., rocks and forest glades with *Paeonia* sp., 28.v.2018, 1 ♀, DGe leg. (BFUS) (**Plate I, 9**).

****Cortodera flavimana flavimana* (Waltl, 1838)**

New data: near Babek Vill., 42°26.262'N 25°04.794'E, 388 m a.s.l., meadows, 22.iv.2018, 12 ♂♂, 3 ♀♀, on flowers of *Ranunculus* sp., YP & DGr leg. (BFUS); near Rozovets Vill., 42°27.186'N 25°06.603'E, 426 m a.s.l., riverside meadows, 23.iv.2018, 2 ♂♂, 2 ♀♀, on flowers of *Ranunculus* sp., DGr & YP leg. (BFUS); 1 km SW Turia Vill., 42°33.862'N 25°10.386'E, 480 m a.s.l., roadside verges, 23.iv.2018, 1 ♂, p/f, DGr & YP leg. (BFUS); SE Beguntsi Vill., near Byala Reka Riv., 42°32.601'N 24°53.247'E, 321 m a.s.l., riverside meadows, 23.v.2018, 2 ♂♂, p/f, DGr & YP leg. (BFUS); 1 km SE Svezhen Vill., 42°29.377'N 25°02.429'E, 793 m a.s.l., meadows, 23.v.2018, 14 ♂♂, 11 ♀♀, on flowers of *Ranunculus* sp., YP, IGr & DGr leg. (BFUS) (**Plate I, 10**); the same data, but 42°29.423'N 25°02.509'E, 810 m a.s.l., 3 ♂♂, 3 ♀♀, DGr leg. (BFUS); 1 km SW Turia Vill., 42°33.862'N 25°10.386'E, 480 m a.s.l., meadows and roadside verges, 24.v.2018, 1 ♀, p/f, DGr & YP leg. (BFUS); 5 km SE Turia Vill., 42°31.786'N 25°11.763'E, 565 m a.s.l., riverside meadows and roadside verges, 24.v.2018, 2 ♂♂, 1 ♀, p/f, DGr & YP leg. (BFUS); Svezhen Vill., 42°30.292'N 25°01.540'E, 747 m a.s.l., riverside vegetation, 25.v.2018, 1 ♀, p/f, DGr leg. (BFUS); NW Svezhen Vill., 42°30.649'N 25°00.641'E, 749 m a.s.l., edge of a beech-oak forest, 25.v.2018, 1 ♀, p/f, YP leg. (BFUS).

****Cortodera humeralis humeralis* (Schaller, 1783)**

New data: 5 km SW Chehlar Vill., 42°24.708'N 25°06.145'E, 429 m a.s.l., roadside vegetation, 22.iv.2018, 1 ♀, p/f, DGr & YP leg. (BFUS); NW Svezhen Vill., 42°30.653'N 25°00.629'E, 752 m a.s.l., edge of a beech-oak forest, 23.iv.2018, 1 ♀, YP leg. (BFUS) (**Plate I, 11**).

****Dinoptera collaris* (Linnaeus, 1758)**

New data: N of Kolena Vill., 42°29.340'N 25°43.220'E, 290 m a.s.l., riverine forest, forest glades, 23.v.2017, 1 ♂, DGe leg. (BFUS); SE Beguntsi Vill., near Byala Reka Riv., 42°32.601'N 24°53.247'E, 321 m a.s.l., riverside meadows, 23.v.2018, 1 ♀, p/f, DGr & YP leg. (BFUS); 1 km SE Svezhen Vill., 42°29.377'N 25°02.429'E, 793 m a.s.l., meadows, 23.v.2018, 1 ♂, 1 ♀, p/f, YP & DGr leg. (BFUS); the same data, but 42°29.423'N 25°02.509'E, 810 m a.s.l., 23.v.2018, 6 ♂♂, 1 ♀, p/f, DGr leg. (BFUS); Svezhen Vill., 42°30.292'N 25°01.540'E, 747 m a.s.l., riverside vegetation, 25.v.2018, 1 ♀, p/f, DGr leg. (BFUS); NW Svezhen Vill., 42°30.649'N 25°00.641'E, 749 m a.s.l., edge of a beech-oak forest, 25.v.2018, 1 ♀, p/f, YP leg. (BFUS); Beter Peak area, N of Zmeyovo Vill., 42°30.570'N 25°37.493'E, 705 m a.s.l., dirt road, mixed forest with glades, 28.v.2018, 1 ♀, DGe leg. (BFUS).

****Rhagium (Megarhagium) mordax* (De Geer, 1775)**

New data: E Svezhen Hut, 42°30.600'N 25°04.433'E, 975 m a.s.l., beech forest, 11.xi.2019 – 09.v.2020, 1 ♂, pitfall trap, TT & NK leg. (BFUS).

CERAMBYCIDAE

***Rhagium (Rhagium) inquisitor inquisitor* (Linnaeus, 1758)**

Buzovgrad Vill. (Ganev 1985: 148, as *Rhagium inquisitor* L.).

Spondylidinae Audinet-Serville, 1832

Asemini J. Thomson, 1861

****Arhopalus ferus* (Mulsant, 1839)**

New data: Hrishteni Vill., 42°27.212'N 25°42.315'E, 230 m a.s.l., yard of a house, viii. 2016, 1 ♂, found dead, DGe leg. (BFUS); the same locality, but 21.vii.2018, 1 ♀, DGe leg. (BFUS).

****Arhopalus rusticus rusticus* (Linnaeus, 1758)**

New data: Hrishteni Vill., 42°27.212'N 25°42.315'E, 230 m a.s.l., yard of a house, 02.v.2018, 1 ♀, on lamp, DGe leg. (BFUS); 2 km SW Chehlar Vill., 42°24.862'N 25°08.352'E, 507 m a.s.l., pine forest, 25.viii.2018, 1 ♀, found dead under bark, ECh leg. (BFUS).

Saphanini Gistel, 1848

****Saphanus piceus ganglbaueri* Brancsik, 1886**

New data: NW Svezhen Hut, 42°31.050'N 25°02.667'E, 1022 m a.s.l., pure beech forest, 22.iii. - 07.vii.2019, 1 ♂, pitfall trap, TT & NK leg. (BFUS); S Pavel Banya, 42°31.583'N 25°11.983'E, 583 m a.s.l., riverine forest of *Carpinus* sp., *Alnus* sp., *Corylus avellana* L., 24.iii. - 09.vii.2019, 1 ♀, pitfall trap, TT & NK leg. (BFUS); E Svezhen Hut, 42°30.583'N 25°03.850'E, 1100 m a.s.l., beech forest, mountain ridge, 07.vii. - 11.xi.2019, 1 ♀, pitfall trap, TT & NK leg. (BFUS) (**Plate II, 12**).

Spondylidini Audinet-Serville, 1832

****Spondylis buprestoides* (Linnaeus, 1758)**

New data: NW Svezhen Hut, 42°31.000'N 25°02.633'E, 1015 m a.s.l., Scots pine (*Pinus sylvestris* L.) stands mixed with spruce, Douglas fir and beech, 07.vii. - 11.xi.2019, 1 ♀, pitfall trap, TT & NK leg. (BFUS).

Tetropiini Seidlitz, 1891

***Tetropium fuscum fuscum* (Fabricius, 1787)**

Buzovgrad Vill. (Ganev 1985: 148, as *Tetropium fuscum* Fab.).

Cerambycinae Latreille, 1802

Callidiini Kirby, 1837

****Callidium (Callidium) violaceum* (Linnaeus, 1758)**

New data: Hrishteni Vill., 42°27.212'N 25°42.315'E, 230 m a.s.l., yard of a house, iii.2017, 6 ♂♂, 6 ♀♀, found dead, DGe leg. (BFUS); the same data, but 25.iv.2018, 1 ♂, DGe leg. (BFUS); the same data, but 06.v.2018, 1 ♀, in spider web, DGe leg. (BFUS); the same data, but in the house, 18.v.2018, 1 ♀, DGe leg. (BFUS).

***Phymatodes (Phymatoderus) lividus* (Rossi, 1794)**

Stara Zagora (Sredna Gora) (Nedelkov 1909a: 14, as *Phymatodes glabratum* Charp., determination revised by Kantardjiewa-Minkowa 1932: 95).

****Phymatodes (Phymatodes) testaceus* (Linnaeus, 1758)**

New data: Hrishteni Vill., 42°27.212'N 25°42.315'E, 230 m a.s.l., yard of a house, 15.v.2018, 1 ♂, on the window net, DGe leg. (BFUS).

CERAMBYCIDAE

****Ropalopus (Ropalopus) clavipes* (Fabricius, 1775)**

New data: Hrishteni Vill., 42°27.212'N 25°42.315'E, 230 m a.s.l., yard of a house, 20.v.2018, 1 ♂, in herbaceous vegetation, DGe leg. (BFUS).

***Ropalopus (Ropalopus) femoratus* (Linnaeus, 1758)**

Buzovgrad Vill. (Ganev 1985: 149, as *Rhopalopus femoratus* L.).

Cerambycini Latreille, 1802

***Cerambyx (Cerambyx) dux* (Faldermann, 1837)**

Turia Vill. (Kantardjiewa-Minkowa 1932: 84).

***Cerambyx (Cerambyx) miles* Bonelli, 1812**

Turia Vill. (Joakimov 1904: 33).

New data: Turia Vill. [in Cyrillic]/2.VII.[19]20[/ex collectio/D. Joakimov/Bulgarien, 1 ♂, 1 ♀ (NMNHS).

***Cerambyx (Microcerambyx) scopolii scopolii* Fuessly, 1775**

Buzovgrad Vill. (Ganev 1985: 149, as *Cerambyx scopolii* Fuess.).

New data: Hrishteni Vill., 42°27.212'N 25°42.315'E, 230 m a.s.l., to the yard of a house, 02.v.2018, 1 ♀, on a dirt road, DGe leg. (BFUS); 3 km S Turia Vill., 42°32.601'N 25°10.937'E, 538 m a.s.l., hillside, meadows, roadside verges, 24.v.2018, 1 ♂, 1 ♀, DGr & YP leg. (BFUS); 5 km SE Turia Vill., 42°31.786'N 25°11.763'E, 565 m a.s.l., riverside meadows and roadside verges, 24.v.2018, 1 ♂, 1 ♀, p/f, DGr & YP leg. (BFUS); 2 km NE Mrachenik Vill., 42°30.260'N 24°59.074'E, 717 m a.s.l., roadside meadows and shrubs, 24.v.2018, 1 ♀, DGr leg. (BFUS); NW Svezhen Vill., 42°30.649'N 25°00.641'E, 749 m a.s.l., edge of a beech-oak forest, 25.v.2018, 1 ♀, p/f, YP leg. (BFUS); Beter Peak area, N of Zmeyovo Vill., 42°30.570'N 25°37.493'E, 705 m a.s.l., dirt road, mixed forest with glades, 28.v.2018, 2 ♂♂, DGe leg. (BFUS); 3,5 km NW Babek Vill., 42°28.461'N 25°03.852'E, 696 m a.s.l., roadside vegetation, cutting area, 23.vi.2018, 1 ♀, YP leg. (BFUS).

Clytini Mulsant, 1839

****Chlorophorus (Crassofasciatus) hungaricus* Seidlitz, 1891**

New data: W of Stara Zagora, 42°24.547'N 25°33.442'E, 390 m a.s.l., meadows and shrubs, 04.vi.2018, 1 ♀, DGe leg. (BFUS) (**Plate II, 13**).

****Chlorophorus (Humeromaculatus) figuratus* (Scopoli, 1763)**

New data: S of Shanovo Vill., 42°31.867'N 25°38.698'E, 434 m a.s.l., oak-hornbeam forest, 15.v.2018, 1 ♀, DGe leg. (BFUS); 1,5 km NW Babek Vill., 42°27.384'N 25°04.172'E, 512 m a.s.l., meadows, 24.v.2018, 1 ♀, p/f, DGr leg. (BFUS); Beter Peak area, N of Zmeyovo Vill., 42°30.570'N 25°37.493'E, 705 m a.s.l., dirt road, mixed forest with glades, 28.v.2018, 1 ♂, 1 ♀, DGe leg. (BFUS).

****Chlorophorus (Immaculatus) varius varius* (O. F. Müller, 1766)**

New data: Hrishteni Vill., 42°27.212'N 25°42.315'E, 230 m a.s.l., yard of a house, 13.vi.2018, 1 ♂, attractant trap for Zygaenidae, on *Prunus domestica* L., DGe leg. (BFUS); the same data, but 27.vi.2018, 1 ♀, on the wall of a house, DGe leg. (BFUS); 1 km SW Turia Vill., 42°33.829'N 25°10.442'E, 488 m a.s.l., hillside, meadows, 24.vi.2018, 1 ♂, p/f, DGr leg. (BFUS) (**Plate II, 14**); 5 km SW Chehlaré Vill., 42°24.707'N 25°06.158'E, 431 m a.s.l., roadside vegetation, 21.vii.2018, 1 ♂, 1 ♀, p/f, DGr & YP leg. (BFUS).

CERAMBYCIDAE

****Chlorophorus (Perderomaculatus) sartor* (O. F. Müller, 1766)**

New data: 1 km NW Dolno Novo Selo Vill., 42°25.886'N 25°13.792'E, 437 m a.s.l., dirt road, roadside vegetation, 24.vi.2018, 1 ♀, p/f, YP & IGr leg. (BFUS); near Rozovets Vill., bank of Stara Reka Riv., 42°27.685'N 25°07.232'E, 469 m a.s.l., riverside vegetation, 24.vi.2018, 1 ♂, p/f, DGr leg. (BFUS); W of Yagoda Vill., 42°32.347'N 25°33.578'E, 315 m a.s.l., streamside meadows with shrub and tree vegetation, 02.vii.2018, 1 ♀, DGe leg. (BFUS); 5 km SW Chehlar Vill., 42°24.707'N 25°06.158'E, 431 m a.s.l., roadside vegetation, 21.vii.2018, 1 ♂, 1 ♀, p/f, DGr & YP leg. (BFUS); 4,5 km SW Chehlar Vill., 42°24.744'N 25°06.337'E, 450 m a.s.l., dirt road, meadows, 21.vii.2018, 1 ♂, 3 ♀♀, p/f, YP leg. (BFUS).

***Clytus (Clytus) rhamni temesiensis* (Germar, 1824)**

Sredna Gora/S of Turia Vill. (Joakimov 1904: 33, as *Clytus rhamnus* Germ.); Buzovgrad Vill. (Ganev 1985: 150, as *Clytus rhamni* Ger.).

New data: near Zelenikovo Vill., 42°24.969'N 25°04.815'E, 330 m a.s.l., roadside verges, 24.v.2018, 1 ♂, p/f, YP leg. (BFUS); on the road to Moruley Peak, 42°31.462'N 25°45.530'E, 620 m a.s.l., oak-hornbeam forest, forest glades, 07.vi.2018, 1 ♀, DGe leg. (BFUS); 5 km SW Chehlar Vill., 42°24.707'N 25°06.158'E, 431 m a.s.l., roadside vegetation, 23.vi.2018, 1 ♂, 3 ♀♀, p/f, YP & DGr leg. (BFUS); 1 km NW Babek Vill., 42°27.184'N 25°04.127'E, 469 m a.s.l., meadows and roadside verges, 23.vi.2018, 3 ♂♂, 1 ♀, p/f, DGr leg. (BFUS); 3 km SE Svezhen Vill., 42°28.875'N 25°03.264'E, 763 m a.s.l., meadows and roadside verges, 23.vi.2018 - 24.vi.2018, 2 ♀♀, p/f, DGr & YP leg. (BFUS) (**Plate II, 15**); 3 km NW Gorno Novo Selo Vill., near Kaletu Place, 42°28.451'N 25°13.324'E, 800 m a.s.l., meadows and roadside verges, 24.vi.2018, 2 ♂♂, 1 ♀, p/f, DGr leg. (BFUS); the same data, but 42°28.430'N 25°13.294'E, 808 m a.s.l., 24.vi.2018, 2 ♂♂, 1 ♀, p/f, YP leg. (BFUS); 1 km SE Svezhen Vill., 42°29.242'N 25°02.469'E, 819 m a.s.l., meadows and roadside verges, 24.vi.2018, 1 ♂, 1 ♀, p/f, DGr & YP leg. (BFUS).

***Echinocerus floralis* (Pallas, 1773)**

Buzovgrad Vill. (Ganev 1985: 150, as *Plagionotus floralis* Pall.).

New data: W of Stara Zagora, 42°24.547'N 25°33.442'E, 390 m a.s.l., meadows and shrubs, 04.vi.2018, 1 ♀, DGe leg. (BFUS); 4,5 km SW Chehlar Vill., 42°24.744'N 25°06.337'E, 450 m a.s.l., dirt road, meadows, 23.vi.2018, 2 ♂♂, p/f, DGr & YP leg. (BFUS) (**Plate II, 16**); 1 km NW Babek Vill., 42°27.184'N 25°04.127'E, 469 m a.s.l., meadows and roadside verges, 23.vi.2018, 1 ♀, p/f, DGr leg. (BFUS).

***Isotomus speciosus speciosus* (D. H. Schneider, 1787)**

Turia Vill. (Kantardjiewa-Minkowa 1932: 98, as *Isotomus speciosus* Schneid.); Buzovgrad Vill. (Ganev 1985: 150, as *Isotomus speciosus* Schneider).

***Plagionotus arcuatus arcuatus* (Linnaeus, 1758)**

Buzovgrad Vill. (Ganev 1985: 150, as *Plagionotus arcuatus* L.).

***Xylotrechus (Xylotrechus) arvicola arvicola* (Olivier, 1795)**

Buzovgrad Vill. (Ganev 1985: 150, as *Xylotrechus arvicola* Oliv.).

Graciliini Mulsant, 1839

****Axinopalpis gracilis gracilis* (Krynicky, 1832)**

New data: Hrishteni Vill., 42°27.212'N 25°42.315'E, 230 m a.s.l., yard of a house, 12.vi.2018, 1 ♂, on lamp, DGe leg. (BFUS).

CERAMBYCIDAE

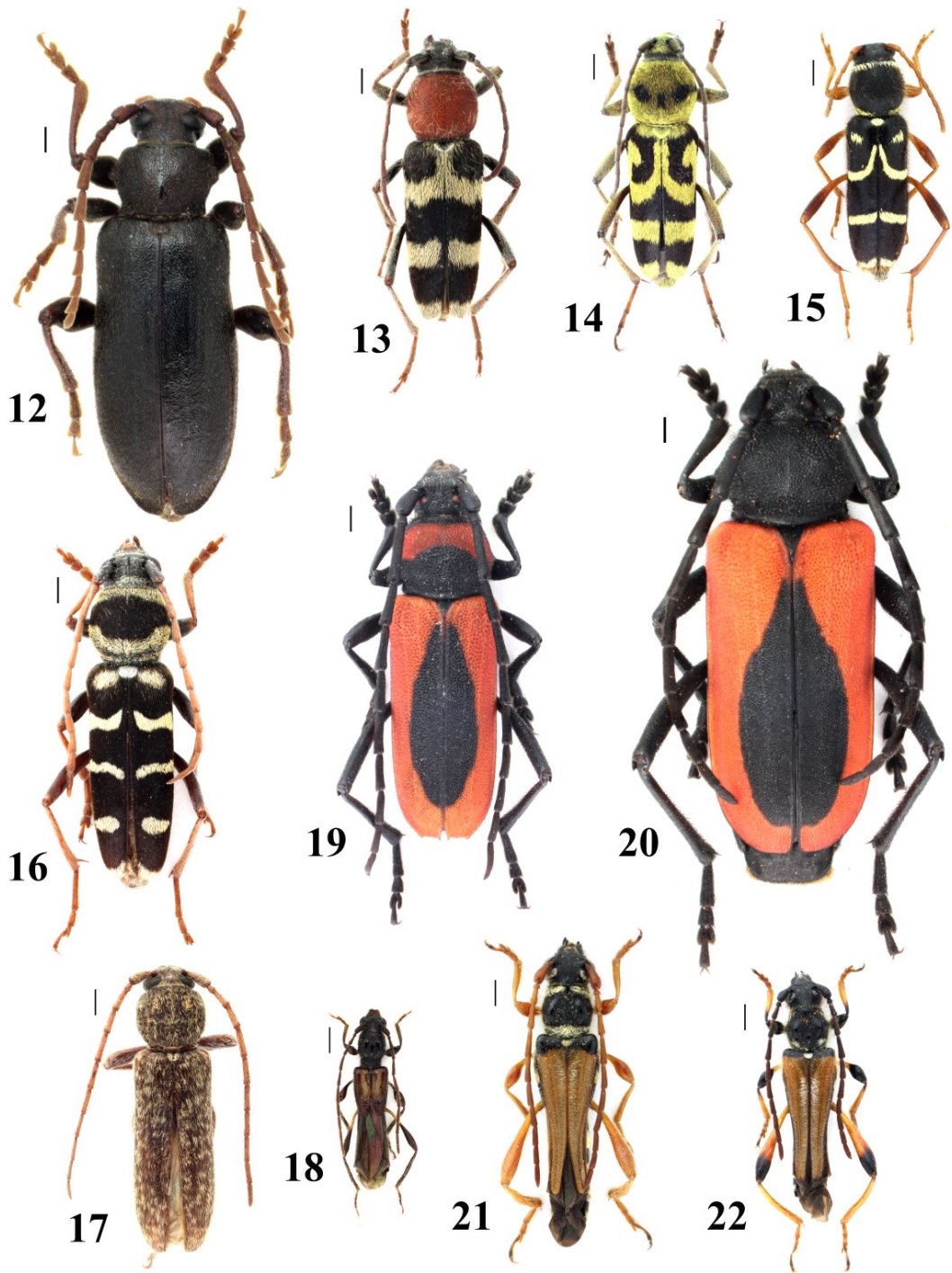


Plate II. 12 – *Saphanus piceus ganglbaueri*, E Svezhen Hut, 07.vii.2019 - 11.xi.2019, female; 13 – *Chlorophorus hungaricus*, W of Stara Zagora, 04.vi.2018, female; 14 – *Ch. varius varius*, 1 km SW Turia Vill., 24.vi.2018, male; 15 – *Clytus rhamni temesiensis*, 3 km SE Svezhen Vill., 24.vi.2018, female; 16 – *Echinocerus floralis*, 4,5 km SW Chehlaré Vill., 23.vi.2018, male; 17 – *Trichoferus fasciculatus fasciculatus*, Hrishteni Vill., 17.viii.2018, male; 18 – *Molorchus umbellatarum umbellatarum*, SE Beguntsi Vill., 23.v.2018, female; 19 – *Purpuricenus globulicollis globulicollis*, 5 km SE Turia Vill., 24.vi.2018, male; 20 – *P. kaehleri rossicus*, 1 km NW Dolno Novo Selo Vill., 24.vi.2018, female; 21 – *Stenopterus flavicornis*, 1,5 km NW Babek Vill., 23.vi.2018, male; 22 – *S. rufus geniculatus*, 3 km SE Svezhen Vill., male. Scale bars: 1 mm.

CERAMBYCIDAE

***Penichroa fasciata* (Stephens, 1831)**

Turia Vill. (Joakimov 1904: 32, as *Exilia timida* Muls. [sic!], Kantardjiewa-Minkowa 1932: 85); rev.: Turia [in Cyrillic]/1.viii.1898/Col. D. Ioakimov, 2 ex. (NMNHS).

New data: Hrishteni Vill., 42°27.212'N 25°42.315'E, 230 m a.s.l., yard of a house, 11.vii.2018, 1 ♂, under the window, DGe leg. (BFUS).

Hesperophanini Mulsant, 1839

***Stromatium auratum* (Böber, 1793)**

Turia Vill. (Joakimov 1904: 32, as *Stromatium unicolor* Oliv.); rev.: Turia [in Cyrillic]/1.viii.1900/Col. D. Ioakimov, 1 ex. (NMNHS); Turia [in Cyrillic]/20.vii.1907/Col. D. Ioakimov, 1 ex. (NMNHS).

New data: Hrishteni Vill., 42°27.212'N 25°42.315'E, 230 m a.s.l., yard of a house, x. (?) 2017, 1 ♀, found dead, DGe leg. (BFUS); the same data, but 15.vii.2018, 1 ♀, DGe leg. (BFUS); the same data, but 10.viii.2018, 1 ♂, DGe leg. (BFUS).

***Trichoferus fasciculatus fasciculatus* (Faldermann, 1837)**

Turia Vill. (Kantardjiewa-Minkowa 1932: 84, as *Trichoferus griseus* Fabr. v. *fasciculatus* Fald.).

New data: Hrishteni Vill., 42°27.212'N 25°42.315'E, 230 m a.s.l., yard of a house, 15.vii.2018, 1 ♀, DGe leg. (BFUS); the same data, but 17.viii.2018, 1 ♂, on lamp, DGe leg. (BFUS) (**Plate II, 17**).

#*Trichoferus griseus* (Fabricius, 1793)

Turia Vill. (Joakimov 1904: 32, as *Hesperophanes grisseus* Fabr.).

Notes: It is most likely that the cited record is based on the same material, later determined as *Trichoferus griseus* Fabr. v. *fasciculatus* Fald. by Kantardjiewa-Minkowa (1932). The presence of the species *T. griseus* (Fabricius, 1793) in the study area needs confirmation.

Hylotruperini Zagajkevitch, 1991

***Hylotrupes bajulus* (Linnaeus, 1758)**

Turia Vill. (Joakimov 1904: 32, as *Hylotrupes* [sic!] *bajulus* L.).

New data: Hrishteni Vill., 42°27.212'N 25°42.315'E, 230 m a.s.l., yard of a house, viii. 2016, 2 ♂♂, found dead, DGe leg. (BFUS); the same data, but iii.2017, 1 ♂, 2 ♀♀, DGe leg. (BFUS); the same data, but 02.v.2018, 1 ♀, on lamp, DGe leg. (BFUS); the same data, but 10.vi.2018, 1 ♀, found dead, DGe leg. (BFUS).

Molorchini Gistel, 1848

****Molorchus (Molorchus) umbellatarum umbellatarum* (Schreber, 1759)**

New data: SE Beguntsi Vill., near Byala Reka Riv., 42°32.601'N 24°53.247'E, 321 m a.s.l., riverside meadows, 23.v.2018, 2 ♀♀, p/f, DGr & YP leg. (BFUS) (**Plate II, 18**).

Purpuricenini J. Thomson, 1861

****Purpuricenus globulicollis globulicollis* Dejean, 1839**

New data: 5 km SE Turia Vill., 42°31.770'N 25°11.765'E, 565 m a.s.l., riverside forest, 24.vi.2018, 1 ♂, found dead in the river, DGr & IGr leg. (BFUS) (**Plate II, 19**).

***Purpuricenus kaehleri rossicus* Danilevsky, 2019**

Turia Vill. (Joakimov 1904: 33, as *Purpuricenus koehleri* [sic!] Fabr., Kantardjiewa-Minkowa 1932: 99, as *Purpuricenus Kaehleri* L.); rev.: Turia [in Cyrillic]/28.vii.1897/Col. D. Ioakimov, 1 ♂ (NMNHS).

New data: 1 km NW Dolno Novo Selo Vill., 42°25.886'N 25°13.792'E, 437 m a.s.l., dirt road, roadside vegetation, 24.vi.2018, 1 ♀, YP & IGr leg. (BFUS) (**Plate II, 20**).

Notes: The subspecies range includes South European Territory of Russia, North Caucasus, North-East Kazakhstan, Belarus, Ukraine, Moldova, Central Europe, partly South Europe (including Bulgaria) and North Turkey (Danilevsky (2019a, 2019b). The shape and position of the black elytral spot of the specimen from Sarnena Gora Mts. correspond well to some of the individuals in the type series (Danilevsky 2019b).

Rosaliini Fairmaire, 1864

***Rosalia (Rosalia) alpina alpina* (Linnaeus, 1758)**

Sredna Gora/S of Turia Vill. (Joakimov 1904: 33, as *Rosalia alpina* L.); rev.: Bratan [Peak] [in Cyrillic]/23.vii.1899/Col. D. Ioakimov, 1 ♂ (NMNHS).

New data: Turia [in Cyrillic]/28.vii.1906/Col. D. Ioakimov, 1 ♂ (NMNHS).

Notes: The species is included in Annexes II and IV of the Directive 92/43/EEC on the conservation of natural habitats and of wild fauna and flora (Council of Europe 1992).

Stenopterini Gistel, 1848

****Callimoxys gracilis* (Brullé, 1832)**

New data: 4,5 km SW Chehlaré Vill., 42°24.689'N 25°06.265'E, 442 m a.s.l., meadows and shrubs, 22.iv.2018, 1 ♂, on flowers of *Crataegus monogyna* Jacq., YP leg. (BFUS); NW of Zmeyovo Vill., 42°30.197'N 25°36.025'E, 445 m a.s.l., grasses and shrubs near to alfalfa and fennel (*Foeniculum vulgare* Mill.) stands, 24.iv.2018, 1 ♂, DGe leg. (BFUS); 1 km SE Svezhen Vill., 42°29.377'N 25°02.429'E, 793 m a.s.l., meadows, 23.v.2018, 1 ♀, p/f, YP & DGr leg. (BFUS); near Zelenikovo Vill., 42°24.969'N 25°04.815'E, 330 m a.s.l., roadside verges, 24.v.2018, 1 ♂, 1 ♀, p/f, YP leg. (BFUS); 3 km S Turia Vill., 42°32.601'N 25°10.937'E, 538 m a.s.l., hillside, meadows, roadside verges, 24.v.2018, 1 ♀, p/f, DGr & YP leg. (BFUS).

***Callimus (Lampropterus) femoratus* (Germar, 1824)**

Sredna Gora/S of Turia Vill. (Joakimov 1904: 32, as *Callimus rumelicus* Auct. [sic!]); Turia Vill. (Kantardjiewa-Minkowa 1932: 93, as *Callimus Adonis* Ab.).

****Stenopterus flavicornis* Küster, 1846**

New data: 4,5 km SW Chehlaré Vill., 42°24.744'N 25°06.337'E, 450 m a.s.l., dirt road, meadows, 23.vi.2018, 1 ♂, p/f, DGr & YP leg. (BFUS); 1,5 km NW Babek Vill., 42°27.384'N 25°04.172'E, 512 m a.s.l., meadows, 23.vi.2018, 1 ♂, p/f, DGr leg. (BFUS) (**Plate II, 21**).

****Stenopterus rufus geniculatus* Kraatz, 1863**

New data: 1 km SE Svezhen Vill., 42°29.423'N 25°02.509'E, 810 m a.s.l., meadows, 23.v.2018, 1 ♀, p/f, DGr leg. (BFUS); 1,5 km NW Babek Vill., 42°27.384'N 25°04.172'E, 512 m a.s.l., meadows, 24.v.2018, 1 ♂, 1 ♀, p/f, DGr leg. (BFUS); the same locality, but 23.vi.2018, 2 ♀♀, p/f, DGr leg. (BFUS); NW Svezhen Vill., 42°30.649'N 25°00.641'E, 749 m a.s.l., edge of a beech-oak forest, 25.v.2018, 1 ♀, p/f, YP leg. (BFUS); on the road to Moruley Peak, 42°31.462'N 25°45.530'E, 620 m a.s.l., oak-hornbeam forest, forest glades, 07.vi.2018, 1 ♀, DGe leg. (BFUS); 5 km SW Chehlaré Vill., 42°24.707'N 25°06.158'E, 431 m a.s.l., roadside vegetation, 23.vi.2018, 2 ♂♂, 2 ♀♀, p/f, YP & DGr leg. (BFUS); 4,5 km SW

CERAMBYCIDAE

Chehlar Vill., 42°24.744'N 25°06.337'E, 450 m a.s.l., dirt road, meadows, 23.vi.2018, 5 ♂♂, 9 ♀♀, p/f, DGr & YP leg. (BFUS); 1 km NW Babek Vill., 42°27.184'N 25°04.127'E, 469 m a.s.l., meadows and roadside verges, 23.vi.2018, 4 ♂♂, 5 ♀♀, p/f, DGr & YP leg. (BFUS); 3 km SE Svezhen Vill., 42°28.875'N 25°03.264'E, 763 m a.s.l., meadows and roadside verges, 23.vi.2018 - 24.vi.2018, 2 ♂♂, 5 ♀♀, p/f, DGr & YP leg. (BFUS) (**Plate II, 22**); 1 km SW Turia Vill., 42°33.829'N 25°10.442'E, 488 m a.s.l., hillside, meadows, 24.vi.2018, 3 ♂♂, p/f, DGr & YP leg. (BFUS); 3 km NW Gorno Novo Selo Vill., near Kaleto Place, 42°28.430'N 25°13.294'E, 808 m a.s.l., meadows and roadside verges, 24.vi.2018, 2 ♂♂, 3 ♀♀, p/f, YP leg. (BFUS); 1 km SE Svezhen Vill., 42°29.242'N 25°02.469'E, 819 m a.s.l., meadows and roadside verges, 24.vi.2018, 1 ♀, p/f, DGr & YP leg. (BFUS).

Lamiinae Latreille, 1825

Acanthocinini Blanchard, 1845

****Leiopus (Leiopus) linnei* Wallin, Nylander & Kvamme, 2009**

New data: Hrishteni Vill., 42°27.212'N 25°42.315'E, 230 m a.s.l., yard of a house, 16.v.2018, 1 ♀, DGe leg. (BFUS) (**Plate III, 23**).

Notes: In Bulgaria, *L. linnei* was first reported without exact locality (Wallin *et al.* 2009) and later from the West Balkan Range (Gutowski *et al.* 2010, Gradinarov & Petrova 2019, Gradinarov *et al.* 2020), Strandzha Mts. (Georgiev *et al.* 2018), Belasitsa Mts. (Georgiev *et al.* 2019) and Upper Thracian Plain (Gradinarov *et al.* 2020).

Agapanthiini Mulsant, 1839

****Agapanthia (Agapanthia) cardui* (Linnaeus, 1767)**

New data: near Starozagorski Bani Vill., 42°26.900'N 25°29.562'E, 390 m a.s.l., high grass vegetation, 10.v.2018, 1 ♀, DGe leg. (BFUS); 3 km S Turia Vill., 42°32.601'N 25°10.937'E, 538 m a.s.l., hillside, meadows, roadside verges, 24.v.2018, 2 ♂♂, 1 ♀, p/f, DGr & YP leg. (BFUS); 2 km NE Mrachenik Vill., 42°30.260'N 24°59.074'E, 717 m a.s.l., roadside meadows and shrubs, 24.v.2018, 2 ♂♂, p/f, DGr leg. (BFUS).

***Agapanthia (Epoptes) dahli dahli* (C. F. W. Richter, 1820)**

Buzovgrad Vill. (Ganev 1985: 151, as *Agapanthia dahli* Richler); Srarozagorski bani (Georgiev 2020).

New data: near Zelenikovo Vill., 42°24.969'N 25°04.815'E, 330 m a.s.l., roadside verges, 24.v.2018, 2 ♂♂, 3 ♀♀, p/f, YP leg. (BFUS); 2 km NE Mrachenik Vill., 42°30.260'N 24°59.074'E, 717 m a.s.l., roadside meadows and shrubs, 24.v.2018, 1 ♀, p/f, DGr leg. (BFUS); N Zelenikovo Vill., 42°25.094'N 25°04.733'E, 343 m a.s.l., roadside vegetation next to rose plantations, 23.vi.2018, 1 ♂, p/f, DGr leg. (BFUS).

****Agapanthia (Epoptes) villosviridescens* (De Geer, 1775)**

New data: near Starozagorski Bani Vill., 42°26.900'N 25°29.562'E, 390 m a.s.l., high grass vegetation, 10.v.2018, 1 ♂, 1 ♀, DGe leg. (BFUS); SE Beguntsi Vill., near Byala Reka Riv., 42°32.601'N 24°53.247'E, 321 m a.s.l., riverside meadows, 23.v.2018, 1 ♂, p/f, DGr & YP leg. (BFUS).

****Agapanthia (Smaragdula) osmanlis* Reiche et Saulcy, 1858**

New data: Pavel Banya town, 42°35.225'N 25°12.480'E, 430 m a.s.l., roadside ruderal vegetation, 24.vi.2018, 2 ♂♂, on *Dipsacus laciniatus* L. (Caprifoliaceae), DGr leg. (BFUS) (**Plate III, 24**).

Notes: In Bulgaria, *A. osmanlis* is considered to be rare species (Migliaccio *et al.* 2007), reported from several localities from Black Sea coast and Strandzha Mts. (Kantardjiewa-Minkowa 1934, Simandl 2002, Rapuzzi & Sama 2012, Georgiev *et al.* 2005,

CERAMBYCIDAE

2015). The present report significantly expands the known range of the species in the country.

As a host plant family Hoskovec *et al.* (2020) indicate „Dipsacaceae“ (= Dipsacoideae: Caprifoliaceae). Rapuzzi & Sama (2012) designate *Cephalaria procera* Fisch & Avé-Lall. from the same plant family as a host plant of *A. osmanlis* and consider *Dipsacus laciniatus* L. to be the specific host plant for *Agapanthia viti* Rapuzzi & Sama, 2012. However, both specimens from Pavel Banya locality have the characteristic for *A. osmanlis* ash pubescence, instead of yellowish colored as in *A. viti*. The finding of *A. osmanlis* on the *Tragopogon* sp. (Asteraceae) in the Strandzha Mts. (Georgiev *et al.* 2005) appears to be rather accidental.

****Agapanthia (Smaragdula) violacea* (Fabricius, 1775)**

New data: N of Kolena Vill., 42°29.340'N 25°43.220'E, 290 m a.s.l., riverine forest, forest glades, 23.v.2017, 1 ♂, DGe leg. (BFUS); 3 km S Turia Vill., 42°32.601'N 25°10.937'E, 538 m a.s.l., hillside, meadows, roadside verges, 24.v.2018, 1 ♂, 1 ♀, p/f, DGr & YP leg. (BFUS); 5 km SE Turia Vill., 42°31.786'N 25°11.763'E, 565 m a.s.l., riverside meadows and roadside verges, 24.v.2018, 1 ♂, p/f, DGr & YP leg. (BFUS); 2 km NE Mrachenik Vill., 42°30.260'N 24°59.074'E, 717 m a.s.l., roadside meadows and shrubs, 24.v.2018, 1 ♀, p/f, YP leg. (BFUS); 3 km NE Mrachenik Vill., 42°30.102'N 24°59.900'E, 805 m a.s.l., roadside verges and an oak forest, 24.v.2018, 2 ♀♀, p/f, YP leg. (BFUS); NW Svezhen Vill., 42°30.649'N 25°00.641'E, 749 m a.s.l., meadows and shrubs next to a beech-oak forest, 23.vi.2018, 1 ♀, p/f, YP leg. (BFUS).

***Agapanthia (Synthapsia) kirbyi* (Gyllenhal, 1817)**

Buzovgrad Vill. (Ganev 1985: 151).

New data: 5 km SE Turia Vill., 42°31.786'N 25°11.763'E, 565 m a.s.l., riverside meadows and roadside verges, 24.v.2018, 1 ♂, p/f, DGr leg. (BFUS).

***Agapanthiola leucaspis* (Steven, 1817)**

Stara Zagora - Ayazmoto Place (Angelov 1964: 318, as *Agapanthia leucaspis* Stev.).

New data: Hrishteni Vill., 42°27.212'N 25°42.315'E, 230 m a.s.l., yard of a house, iii.2017, 1 ♂, found dead, DGe leg. (BFUS); N of Lyuyak Vill., 42°31.393'N 25°40.589'E, 578 m a.s.l., stone quarry, rocky grassland near oak-hornbeam forest, 18.v.2018, 1 ♀, DGe leg. (BFUS).

Apodasyini Lacordaire, 1872

****Anaesthetis testacea testacea* (Fabricius, 1781)**

New data: Hrishteni Vill., 42°27.209'N 25°42.218'E, 234 m a.s.l., 14.v.2018, 1 ♀, on a wall near *Juglans regia* L. tree, DGe leg. (BFUS).

CERAMBYCIDAE

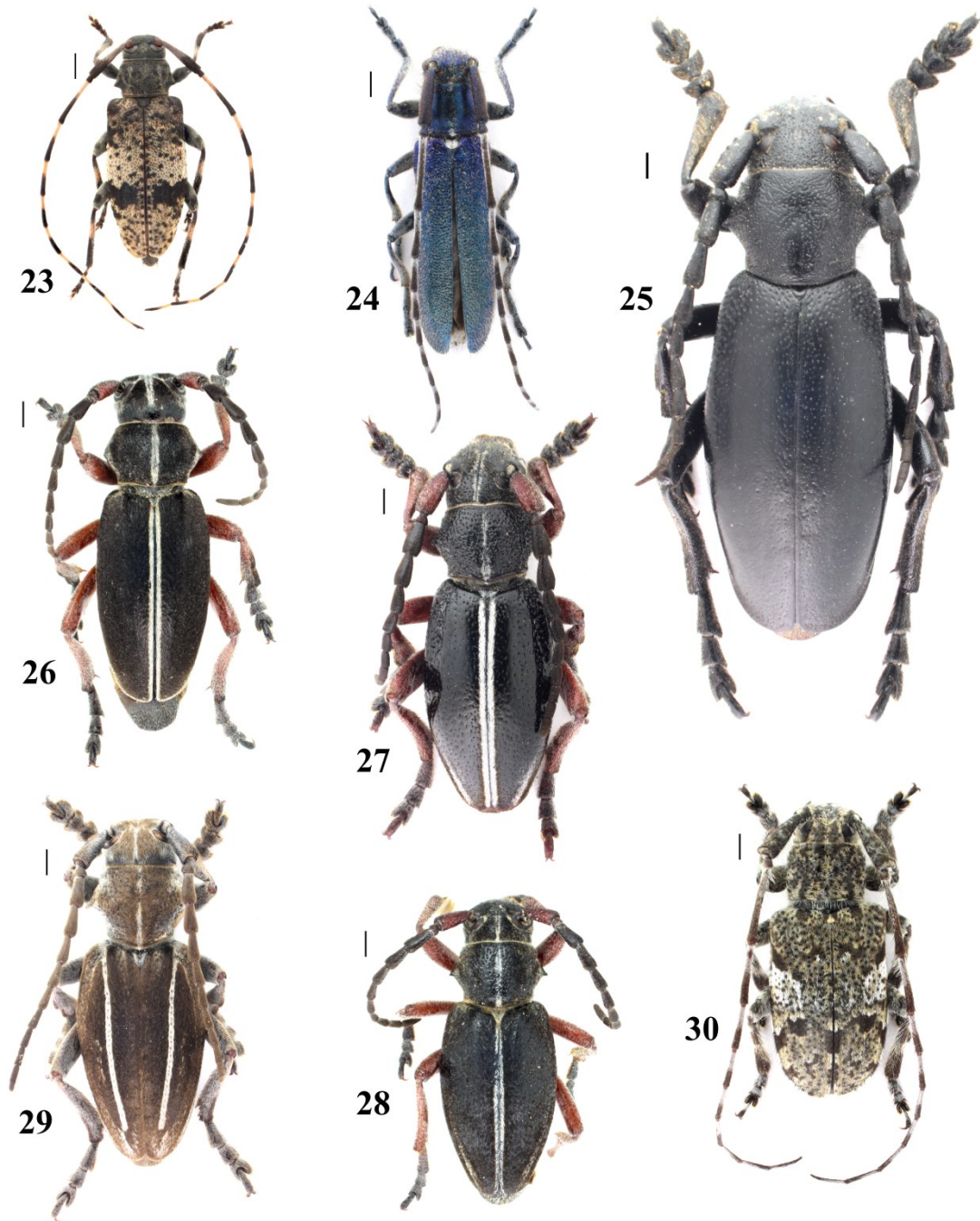


Plate III. 23 – *Leiopus linnei*, Hrishteni Vill., 16.v.2018, female; 24 – *Agapanthia osmanlis*, Pavel Banya, 24.vi.2018, male; 25 – *Dorcadion aethiops aethiops*, 4,5 km SW Chehlare Vill., 23.vi.2018, male; 26 – *D. axillare*, NW Svezhen Hut, 22.iii.2019 - 07.vii.2019, male; 27 – *D. pedestre pedestre*, 2 km NE Mrachenik Vill., 24.v.2018, male; 28 – *D. tauricum tauricum*, NW Stoyan Zaimovo Vill., 23.iii.2019 - 08.vii.2019, male; 29 – *Neodorcadion bilineatum*, SE Beguntsi Vill., 23.v.2018, male; 30 – *Mesosa nebulosa nebulosa*, 3,5 km NW Babek Vill., 23.vi.2018, male. Scale bars: 1 mm.

CERAMBYCIDAE

Dorcadionini Swainson, 1840

Dorcadion (Carinatodorcadion) aethiops aethiops (Scopoli, 1763)

Buzovgrad Vill. (Ganev 1985: 150, as *Dorcadion aethiops* Scop.).

New data: 4,5 km SW Chehlare Vill., 42°24.744'N 25°06.337'E, 450 m a.s.l., dirt road, meadows, 23.vi.2018, 1 ♂, on the ground, DGr & YP leg. (BFUS) (**Plate III, 25**).

Dorcadion (Carinatodorcadion) fulvum erythropterum Fischer von Waldheim, 1823

Starozagorski bani Vill. (Angelov 1964: 317, as *Dorcadion fulvum* Scop.).

New data: N of Hrishteni Vill., 42°27.742'N 25°42.353'E, 310 m a.s.l., on a dirt road near deciduous trees, 03.vi.2018, 1 ♀, on the ground, DGe leg. (BFUS).

****Dorcadion (Cribridorcadion) axillare Küster, 1847***

New data: NW Svezhen Hut, 42°31.050'N 25°02.517'E, 1008 m a.s.l., pasture, mountain ridge, 22.iii. - 07.vii.2019, 1 ♂, pitfall trap, TT & NK leg. (BFUS) (**Plate III, 26**).

****Dorcadion (Cribridorcadion) pedestre pedestre (Poda von Neuhaus, 1761)***

New data: 1 km SW Turia Vill., 42°33.862'N 25°10.386'E, 480 m a.s.l., roadside verges, 23.iv.2018, 3 ♂♂, 1 ♀, in copula on the ground and under stones, DGr leg. (BFUS); 1 km SW Turia Vill., 42°33.862'N 25°10.386'E, 480 m a.s.l., meadows and roadside verges, 24.v.2018, 3 ♂♂, 2 ♀♀, on the ground, DGr & YP leg. (BFUS); 2 km NE Mrachenik Vill., 42°30.260'N 24°59.074'E, 717 m a.s.l., roadside meadows and shrubs, 24.v.2018, 1 ♂, 1 ♀, on the ground, DGr leg. (BFUS) (**Plate III, 27**); 3 km NE Mrachenik Vill., 42°30.102'N 24°59.900'E, 805 m a.s.l., roadside verges and an oak forest, 24.v.2018, 1 ♂, 2 ♀♀, on the ground, DGr & YP leg. (BFUS); Chirpan heights, NW Stoyan Zaimovo Vill., 42°21.033'N 25°20.667'E, 406 m a.s.l., boundary of alfalfa field adjacent to tree and shrub lines, 23.iii. - 08.vii.2019, 2 ♂♂, pitfall trap, TT & NK leg. (BFUS); Chirpan heights, NW Stoyan Zaimovo Vill., 42°21.217'N 25°20.767'E, 435 m a.s.l., abandoned pasture with solitary trees and shrubs (*Pyrus* sp., *Malus* sp., *Prunus cerasifera* Ehrh., *Prunus spinosa* L., *Quercus* sp., *Rubus* sp.), 23.iii. - 08.vii.2019, 1 ♂, 2 ♀♀, pitfall trap, TT & NK leg. (BFUS).

****Dorcadion (Cribridorcadion) tauricum tauricum Waltl, 1838***

New data: Chirpan heights, NW Stoyan Zaimovo Vill., 42°21.033'N 25°20.667'E, 406 m a.s.l., boundary of alfalfa field adjacent to tree and shrub lines, 23.iii. - 08.vii.2019, 1 ♂, pitfall trap, TT & NK leg. (BFUS) (**Plate III, 28**).

Neodorcadion bilineatum (Germar, 1824)

Buzovgrad Vill. (Ganev 1985: 150, 1986: 310).

New data: 2,5 km SE Domlyan Vill., 42°30.764'N 24°55.321'E, 448 m a.s.l., meadows and shrubs next to an oak forest, 23.iv. - 23.v.2018, 1 ♀, pitfall trap, DGr & YP leg. (BFUS); Stara Zagora, 42°25.910'N 25°36.787'E, 296 m a.s.l., 30.iv.2018, 1 ♂, DGe leg. (BFUS); Hrishteni Vill., 42°27.063'N 25°42.153'E, 202 m a.s.l., grasses next to a dirt road, 12.v.2018, 1 ♂, DGe leg. (BFUS); SE Beguntsi Vill., near Byala Reka Riv., 42°32.574'N 24°53.249'E, 322 m a.s.l., dirt road, 23.v.2018, 2 ♂♂, 1 ♀, on the ground, DGr & YP leg. (BFUS) (**Plate III, 29**); 1 km SW Turia Vill., 42°33.862'N 25°10.386'E, 480 m a.s.l., meadows and roadside verges, 24.v.2018, 1 ♀, on the ground, DGr & YP leg. (BFUS); Svezhen Vill., 42°30.292'N 25°01.540'E, 747 m a.s.l., riverside vegetation, 24.v.2018, 1 ♀, DGr leg. (BFUS); Hrishteni Vill., 42°27.212'N 25°42.315'E, 230 m a.s.l., yard of a house, 03.vi.2018, 1 ♀, in spider web, DGe leg. (BFUS); Svezhen Vill., 42°30.309'N 25°01.505'E, 750 m a.s.l., on the road, 21.vii.2018, 1 ♂, DGr leg. (BFUS); Chirpan heights, NW Veren Vill., 42°21.317'N 25°10.783'E, 353 m a.s.l., abandoned pasture with *Paliurus spina-christi* Mill. and *Opuntia*

CERAMBYCIDAE

sp., 23.iii. - 08.vii.2019, 1 ♂, pitfall trap, TT & NK leg. (BFUS); Chirpan heights, NW Veren Vill., 42°21.550'N 25°10.617'E, 366 m a.s.l., black locust (*Robinia pseudoacacia* L.) stands on sandy soil, 23.iii. - 08.vii.2019, 1 ♀, pitfall trap, TT & NK leg. (BFUS); the same locality, but 08.vii. - 10.xi.2019, 1 ♀, pitfall trap, TT & NK leg. (BFUS); Chirpan heights, NW Stoyan Zaimovo Vill., 42°21.033'N 25°20.667'E, 406 m a.s.l., boundary of alfalfa field adjacent to tree and shrub lines, 23.iii. - 08.vii.2019, 3 ♂♂, 3 ♀♀, pitfall trap, TT & NK leg. (BFUS); the same locality, but 08.vii. - 10.xi.2019, 3 ♂♂, 1 ♀, pitfall trap, TT & NK leg. (BFUS).

***Neodorcadion exornatum* (Frivaldszky von Frivald, 1835)**

Buzovgrad Vill. (Ganev 1985: 150; 1986: 310).

Exocentrini Pascoe, 1864

***Exocentrus adpersus* Mulsant, 1846**

Turia Vill. (Kantardjiewa-Minkowa 1934: 137); rev.: Turia [in Cyrillic]/21.6.[19]07 [without collector's name], 1 ex. (NMNHS).

****Exocentrus punctipennis punctipennis* Mulsant & Guillebeau, 1856**

New data: Hrishteni Vill., 42°27.212'N 25°42.315'E, 230 m a.s.l., yard of a house, 12.vi.2018, 1 ♂, on lamp, DGe leg. (BFUS); the same locality, but 14.vi.2018, 1 ♀, on lamp, DGe leg. (BFUS) (**Plate IV, 31**).

Lamiini Latreille, 1825

****Lamia textor* (Linnaeus, 1758)**

New data: Svezhen Vill., 42°30.297'N 25°01.551'E, 750 m a.s.l., on the road, 23.v.2018, 1 ♂, on the road, DGr leg. (BFUS).

****Morimus asper funereus* Mulsant, 1863**

New data: Turia [in Cyrillic]/25.viii.[18]98/Col. D. Ioakimov, 1 ♂ (NMNHS); Svezhen Vill., 42°29.544'N 25°02.220'E, 780 m a.s.l., 22.iv.2018, 1 ♂, 1 ♀, on the road, DGr leg. (BFUS); NW Svezhen Vill., 42°30.650'N 25°00.641'E, 749 m a.s.l., edge of a beech-oak forest, 25.v. - 23.vi.2018, 1 ♀, pitfall trap, DGr & YP leg. (BFUS); 3 km NW Gorno Novo Selo Vill., near Kaleto Place, 42°28.477'N 25°13.304'E, 810 m a.s.l., cutting area, 24.vi.2018, 1 ♂, on the road, DGr leg. (BFUS); near Kavakliyka Chalet, 42°29.143'N 25°13.321'E, 957 m a.s.l., 24.vi.2018, 1 ♂, on the road, DGr leg. (BFUS); Svezhen Vill., 42°29.908'N 25°01.870'E, 770 m a.s.l., 21.vii.2018, 1 ♂, on the road, DGr leg. (BFUS); NW Svezhen Hut, 42°31.983'N 25°02.083'E, 898 m a.s.l., deciduous forest of beech, oak and hornbeam, 07.vii. - 11.xi.2019, 1 ♀, pitfall trap, TT & NK leg. (BFUS); E Svezhen Hut, 42°30.600'N 25°04.433'E, 975 m a.s.l., beech forest, 07.vii. - 11.xi.2019, 1 ♀, pitfall trap, TT & NK leg. (BFUS); NW Svezhen Hut, 42°31.000'N 25°02.633'E, 1015 m a.s.l., Scots pine (*Pinus sylvestris* L.) stands mixed with spruce, Douglas fir and beech, 07.vii. - 11.xi.2019, 1 ♂, pitfall trap, TT & NK leg. (BFUS).

Notes: The species is included in Annex II of the Directive 92/43/EEC on the conservation of natural habitats and of wild fauna and flora (Council of Europe 1992).

Mesosini Mulsant, 1839

****Mesosa (Aplocnemia) nebulosa nebulosa* (Fabricius, 1781)**

New data: 3,5 km NW Babek Vill., 42°28.501'N 25°03.900'E, 696 m a.s.l., dirt road through an oak forest, cutting area, 23.vi.2018, 1 ♂, 1 ♀, on cut oak branches, in copula, DGr leg. (BFUS) (**Plate III, 30**).

CERAMBYCIDAE

Monochamini Gistel, 1848

***Monochamus sartor* (Fabricius, 1787)**

Buzovgrad Vill. (Ganev 1985: 151).

Phytoeciini Mulsant, 1839

****Oberea (Oberea) linearis* (Linnaeus, 1760)**

New data: S of Shanovo Vill., 42°31.867'N 25°38.698'E, 434 m a.s.l., oak-hornbeam forest, 15.v.2018, 1 ♀, DGe leg. (BFUS) (**Plate IV, 33**).

****Phytoecia (Helladia) millefolii* (Adams, 1817)**

New data: N of Dalboki Vill., 42°29.500'N 25°46.222'E, 330 m a.s.l., rocks and shrubs near a small river, 06.v.2018, 1 ♂, DGe leg. (BFUS) (**Plate IV, 32**).

Notes: Rare species in Bulgaria (Migliaccio *et al.* 2007), reported from several localities along the Black Sea coast (Simandl 2002, Rapuzzi & Georgiev 2007, Georgiev *et al.* 2015). The present record is the first one from the country inland territory.

***Phytoecia (Opsilia) coerulescens coerulescens* (Scopoli, 1763)**

Starozagorski bani Vill., Stara Zagora - Ayazmoto Place (Angelov 1964: 318, as *Phytoecia coerulescens* Scop.); Buzovgrad Vill. (Ganev 1985: 152, as *Phytoecia coerulescens* (Scop.)).

New data: near Zelenikovo Vill., 42°24.943'N 25°04.815'E, 334 m a.s.l., roadside verges, 24.v.2018, 1 ♂, p/f, DGr leg. (BFUS) (**Plate IV, 34**); 1 km SW Turia Vill., 42°33.862'N 25°10.386'E, 480 m a.s.l., meadows and roadside verges, 24.v.2018, 1 ♀, p/f, YP leg. (BFUS); near Kavakliyka Chalet, 42°29.123'N 25°13.411'E, 975 m a.s.l., meadows, 24.vi.2018, 1 ♀, p/f, DGr & YP leg. (BFUS); the same locality, but 22.vii.2018, 1 ♀, found dead on Boraginaceae, DGr leg. (BFUS).

****Phytoecia (Phytoecia) icterica* (Schaller, 1783)**

New data: near Babek Vill., 42°26.262'N 25°04.794'E, 388 m a.s.l., meadows, 22.iv.2018, 1 ♀, YP leg. (BFUS) (**Plate IV, 35**); Hrishteni Vill., 42°27.063'N 25°42.153'E, 227 m a.s.l., ruderal vegetation near outbuildings, 29.iv.2018, 1 ♂, DGe leg. (BFUS); near Zelenikovo Vill., 42°24.969'N 25°04.815'E, 330 m a.s.l., roadside verges, 24.v.2018, 1 ♀, p/f, YP leg. (BFUS).

****Phytoecia (Phytoecia) pustulata pustulata* (Schrank, 1776)**

New data: SE Beguntsi Vill., near Byala Reka Riv., 42°32.601'N 24°53.247'E, 321 m a.s.l., riverside meadows, 23.v.2018, 1 ♀, p/f, DGr & YP leg. (BFUS); 1 km SW Turia Vill., 42°33.862'N 25°10.386'E, 480 m a.s.l., meadows and roadside verges, 24.v.2018, 1 ♀, p/f, YP leg. (BFUS); 5 km SE Turia Vill., 42°31.786'N 25°11.763'E, 565 m a.s.l., riverside meadows and roadside verges, 24.v.2018, 1 ♀, p/f, DGr & YP leg. (BFUS).

***Phytoecia (Phytoecia) virgula* (Charpentier, 1825)**

Starozagorski bani Vill. (Angelov 1964: 318).

New data: S of Shanovo Vill., 42°31.867'N 25°38.698'E, 434 m a.s.l., oak-hornbeam forest, 15.v.2018, 1 ♀, DGe leg. (BFUS); 3 km S Turia Vill., 42°32.601'N 25°10.937'E, 538 m a.s.l., hillside, meadows, roadside verges, 24.v.2018, 1 ♀, p/f, DGr & YP leg. (BFUS).

****Phytoecia (Pilemia) hirsutula hirsutula* (G. F. Frölich, 1793)**

New data: Chirpan heights, Bratya Daskalovi Vill., 42°17.875'N 25°13.297'E, 241 m a.s.l., grasses and shrubs, edge of pine forest (*Pinus nigra* J. F. Arnold), 26.iv.2018, 1 ♂, DGe leg. (BFUS); Hrishteni Vill., 42°27.212'N 25°42.315'E, 231 m a.s.l., yard of a house, 08.v.2018, 1 ♀, DGe leg. (BFUS) (**Plate IV, 36**).

CERAMBYCIDAE

Pogonocherini Mulsant, 1839

***Pogonocherus (Pogonocherus) hispidulus* (Piller & Mitterpacher, 1783)**

Turia Vill. (Kantardjiewa-Minkowa 1934: 136); rev.: Turia [in Cyrillic]/21.VI.1907 [without collector's name], 1 ex. (NMNHS).

****Pogonocherus (Pogonocherus) hispidus* (Linnaeus, 1758)**

New data: Beter Peak, 42°30.687'N 25°37.773'E, 809 m a.s.l., deciduous forest with *Quercus* sp., *Carpinus betulus* L., *Acer* sp., rocks and forest glades with *Paeonia* sp., 28.v.2018, 1 ♀, DGe leg. (BFUS) (**Plate IV, 37**).

Notes: Regarded as rare species in Bulgaria (Migliaccio *et al.* 2007), reported from Vitosha Mts., Central Balkan Range, Maleshevska Planina Mts. (Migliaccio *et al.* 2007) and recently from Western Rhodopes Mts. (Georgiev 2020) and Balchik (Gradinarov *et al.* 2020).

****Pogonocherus (Pogonocherus) perroudi* Mulsant, 1839**

New data: Hrishteni Vill., 42°27.223'N 25°42.311'E, 230 m a.s.l., yard of a house, 16.ii.2018, 1 ♀, on the wall of a house, DGe leg. (BFUS) (**Plate IV, 38**).

Notes: Rare species in Bulgaria, previously reported from Pirin Mts. (Rozhen Monastery) and from Sacar Mts. (Cherepovo Vill. and Pastrogor Vill.) (Migliaccio *et al.* 2007).

Saperdini Mulsant, 1839

***Saperda (Compsidia) populnea populnea* (Linnaeus, 1758)**

Buzovgrad Vill. (Ganev 1985: 151, as *Saperda populnea* L.).

***Saperda (Compsidia) quercus quercus* Charpentier, 1825**

Gorni Domlyan Vill. (Doychev & Georgiev 2004: 170, as *Saperda quercus* Charpentier, 1825).

****Saperda (Lopezcolonia) scalaris scalaris* (Linnaeus, 1758)**

New data: Hrishteni Vill., 42°27.223'N, 25°42.311'E, yard of a house, 20.vi.2019, 1 ex. (photo by D. Georgiev).

***Saperda (Saperda) carcharias* (Linnaeus, 1758)**

Buzovgrad Vill. (Ganev 1985: 151).

Tetropini Portevin, 1927

****Tetrops praeustus praeustus* (Linnaeus, 1758)**

New data: 5 km SW Chehlare Vill., 42°24.709'N 25°06.163'E, 433 m a.s.l., edge of a deciduous forest, 22.iv.2018, 2 ♂♂, 2 ♀♀, at flight, DGr & YP leg. (BFUS) (**Plate IV, 39**); Hrishteni Vill., 42°27.212'N 25°42.315'E, 230 m a.s.l., yard of a house, 07.vi.2019, 1 ♀, DGe leg. (BFUS).

CERAMBYCIDAE

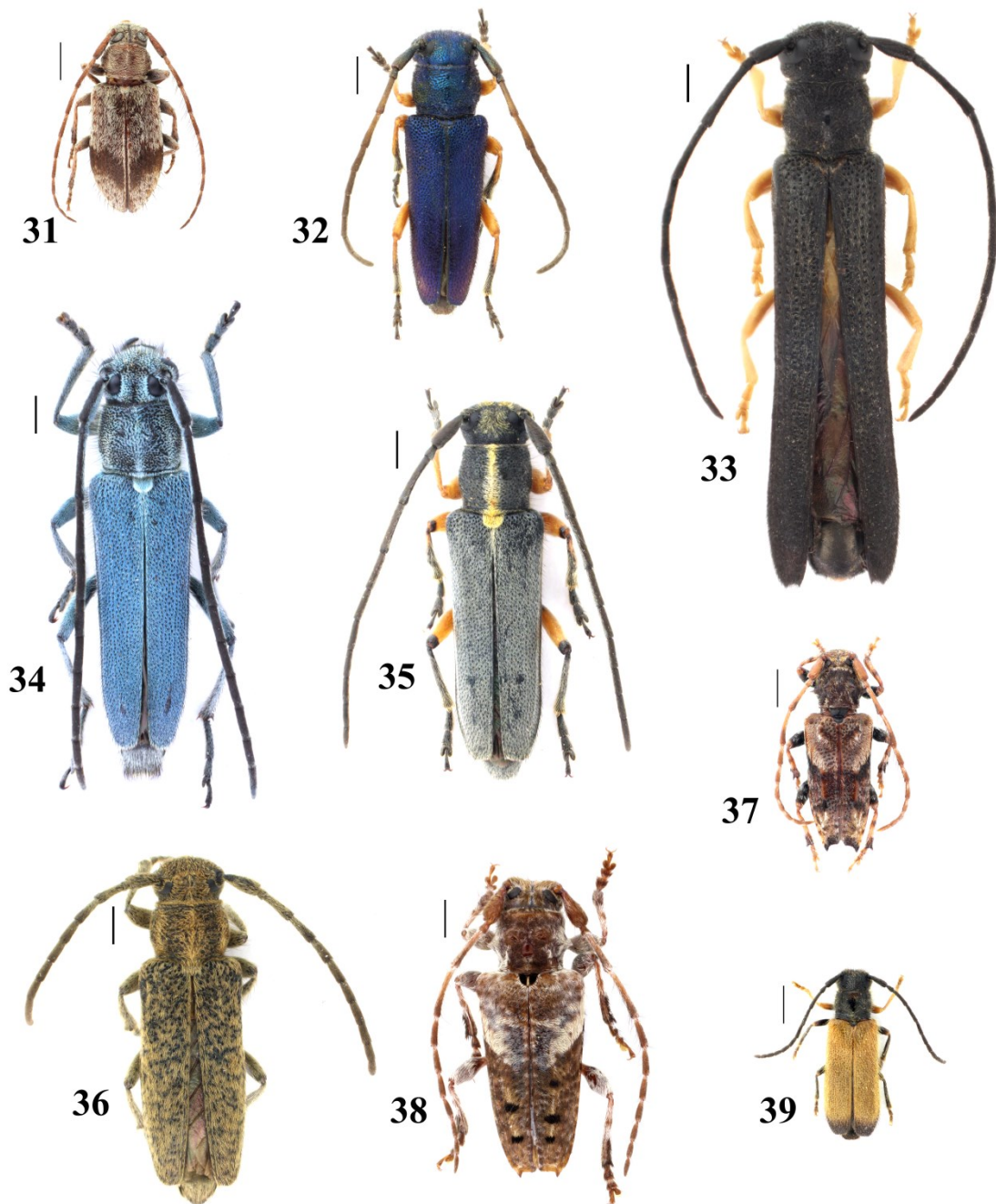


Plate IV. 31 – *Exocentrus punctipennis punctipennis*, Hrishteni Vill., 14.vi.2018, female; 32 – *Phytoecia millefolii*, N of Dalboki Vill., 06.v.2018, male; 33 – *Oberea linearis*, S of Shanovo Vill., 15.v.2018, female; 34 – *Phytoecia coerulescens coerulescens*, Zelenikovo Vill., 24.v.2018, male; 35 – *Phytoecia icterica*, Babek Vill., 22.iv.2018, female; 36 – *Phytoecia hirsutula hirsutula*, Hrishteni Vill., 08.v.2018, female; 37 – *Pogonocherus hispidus*, Beter Peak, 28.v.2018, female; 38 – *Pogonocherus perroudi*, Hrishteni Vill., 16.ii.2018, female; 39 – *Tetrops praeustus praeustus*, 5 km SW Chehlaré Vill., 22.iv.2018, female. Scale bars: 1 mm.

Conclusions

As a result of the present study a total of 98 species of the family Cerambycidae are reported for the Sarnena Gora Mts. Eighteen species are known only from literature records and 55 are new species records for the study area. For 82 of the species new locality data are reported. The new locality records of *Cerambyx miles* and *Rosalia alpina* are revised museum materials, the other 80 records are recently collected material. Of particular importance in terms of their distribution in Bulgaria are findings of *Stenurella melanura samai*, *Leiopus linnei*, *Agapanthia osmanlis*, *Phytoecia millefolii*, *Pogonocherus hispidus* and *P. perroudi*. The species of conservation concern, recorded for Sarnena Gora Mts. are *Rosalia alpina alpina* (old literature data and revised museum materials) and *Morimus asper funereus* (new data).

In comparison to other extensively studied mountain regions in Bulgaria the number of the established species in Sarnena Gora Mts. is close to Belasitsa Mts. (110 species and subspecies), Western Stara Planina Mts. (107 species and subspecies) and Vitosha Mts. (122 species and subspecies) (reference data according to Georgiev *et al.* 2019). Nevertheless the species composition of the family from Sarnena Gora is not yet sufficiently studied. Additions are expected still for Bratan region as well as for the other regions of the mountain. The Chirpan Heights are the most poorly studied region of the mountain with only four recorded species - *Stenurella bifasciata*, *Dorcadion pedestre*, *Dorcadion tauricum* and *Phytoecia hirsutula*.

Acknowledgements. The authors wish to thank Dilian Georgiev (Department of Ecology and Environmental Conservation, University of Plovdiv, Plovdiv, Bulgaria), Teodora Teofilova (Institute of Biodiversity and Ecosystem Research, Bulgarian Academy of Sciences, Sofia, Bulgaria) and Nikolay Kodzhabashev (Department of Hunting and Game Management, University of Forestry, Sofia, Bulgaria) for providing part of the material as well as to Iliya Gradinarov and Evgeni Chehlarov for their assistance in the field work. We are also grateful to Borislav Guéorguiev (National Museum of Natural History, Sofia, Bulgaria) for the opportunity to revise the materials from the NMNHS collection.

References

- Angelov, P. (1964) Coleoptera aus der Thrakischen Tiefebene und einigen angrenzenden Gebieten. In: Valkanov, A. K. (Ed). *Die Fauna Thrakiens I*. Sofia, pp. 307–324 (In Bulgarian, German summary).
- Council of Europe (1992) Directive 43/92/CEE, of 21 May 1992, on the conservation of natural habitats and of wild fauna and flora. *Official Journal of the European Union*, 206: 1–66.
- Danilevsky, M. L. (2011) New subspecies of *Stenurella bifasciata* (Müller, 1776) (Coleoptera, Cerambycidae) from South West Turkey. *Munis Entomology & Zoology*, 6 (1): 1–5.
- Danilevsky, M. L. (2014) *Longicorn beetles (Coleoptera, Cerambycoidea) of Russia and adjacent countries. Part 1*. Moscow, Higher School Consulting, 522 pp. (in Russian, English and German summaries).
- Danilevsky, M. L. (2019a) *Catalog of Palaearctic Cerambycoidea. Updated: 09.04.2019*. Available at: <http://www.cerambycidae.net/catalog.pdf> (accessed on 22 November 2020).
- Danilevsky, M. L. (2019b) Taxonomy notes on Palaearctic Cerambycidae (Coleoptera) with descriptions of several new taxa. *Humanity Space International Almanac*, 8 (2): 79–100.

CERAMBYCIDAE

- Dascălu, M. M. & Fusu, L. (2012) *Dorcadion axillare* Küster, 1847 (Coleoptera, Cerambycidae): distribution, morphometrics, karyotype and description of a new subspecies from Romania. *Zootaxa*, 3322: 35–48.
- Doychev, D. & Georgiev, G. (2004) New and Rare Longhorn Beetles (Coleoptera: Cerambycidae) in Bulgaria. *Acta Zoologica Bulgarica*, 56 (2): 167–174.
- Doychev, D., Topalov, P., Zaemdjikova, G., Sakalian, V. & Georgiev, G. (2017) Host Plants of Xylophagous Longhorn Beetles (Coleoptera: Cerambycidae) in Bulgaria. *Acta Zoologica Bulgarica*, 69 (4): 511–528.
- Ganev, J. (1985) Über die von Dr. Botscharov von Bulgarien gesammelten Cerambycidae-Arten. *Articulata*, 2 (6): 147–153.
- Ganev, J. (1986) Beitrag zur Verbreitung der Familie Cerambycidae (Coleoptera) in Bulgarien. *Articulata*, 2 (9): 307–312.
- Georgiev, G. 2020. New records of longhorn beetles (Coleoptera: Cerambycidae) in entomological collections in Bulgaria. *Forest Science*, 56 (1): 87–99.
- Georgiev, G., Gjonov, I. & Sakalian, V. (2015) New Records of Longhorn Beetles (Coleoptera: Cerambycidae) in Strandzha Mountain. *Journal of the Entomological Research Society*, 17 (2): 73–88.
- Georgiev, G., Gradinarov, D., Gjonov, I. & Sakalian, V. (2018) A check list and areography of longhorn beetles (Coleoptera: Cerambycidae) in Strandzha Mountain, Bulgaria and Turkey. *Silva Balcanica*, 19 (1): 89–116.
- Georgiev, G., Gradinarov, D., Sivilov, O., Gjonov, I., Doychev, D., Gashtarov, V., Cvetkovska–Gjorgjievska, A. & Sakalian, V. (2019) A check list and areography of longhorn beetles (Coleoptera: Cerambycidae) in Belasitsa Mountain, Bulgaria and North Macedonia. *ZooNotes*, Supplement 8: 1–27.
- Georgiev, G., Simov, N., Stojanova, A. & Doychev, D. (2005) New and interesting records of longhorn beetles (Coleoptera: Cerambycidae) in some Bulgarian Mountains. *Acta Zoologica Bulgarica*, 57 (2): 131–138.
- Gradinarov, D. & Petrova, Y. (2019) Longhorn beetles (Coleoptera: Cerambycidae) from Vrachanska Planina Mountains and Vrachanski Balkan Nature Park. In: Bechev, D. & Georgiev, D. (Eds.). *Faunistic diversity of Vrachanski Balkan Nature Park. Part 2*. *ZooNotes*, Supplement 7, Plovdiv University Press, pp. 59–79.
- Gradinarov, D., Sivilov, O., Gashtarov, V., Migliaccio, E., Sakalian, V. & Georgiev, G. (2020) New records of longhorn beetles (Coleoptera: Cerambycidae) in Bulgaria. *Silva Balcanica*, 21 (1): 91–112.
- Gutowski, J. M., Hilszański, J., Kubisz, D., Kurzawa, J., Milkowski, M., Mokrzycki, T., Plewa, R., Przewoźny, M. & Wełnicki, M. (2010) Distribution and host plants of *Leiopus nebulosus* (L.) and *L. linnei* Wallin, Nylander & Kvamme 2009 (Coleoptera: Cerambycidae) in Poland and neighbouring countries. *Polish Journal of Entomology*, 79: 271–282.
- Heyrovský, L. (1931) Beitrag zur Kenntnis der bulgarischen Cerambyciden. *Mitteilungen aus den Königlichen Naturwissenschaftlichen Instituten in Sofia – Bulgarien*, 4: 78–86.
- Hoskovec, M., Jelinek, P. & Rejzek, M. 2020. Cerambycidae. *Longhorn beetles (Cerambycidae) of the West Palaearctic Region*. Available from: <http://www.cerambyx.uochb.cz/> (Accessed on 17 November 2020).
- Joakimov, D. (1904) Prinosa kam balgarskata fauna na nasekomite - Insecta. I. Coleoptera (Contribution to the Bulgarian Insect Fauna - Insecta. I. Coleoptera). *Sbomik za Narodni Umotvorenia, Nauka i Knizhnina (Collection of Folklore, Science and Literature)*, 20: 1–43 (In Bulgarian).
- Kantardjieva-Minkova, S. (1957) Neue seltene Arten Cerambycidae für Bulgarien. *Bulletin de l'Institut de Zoologie*, 6, 539–560 (in Bulgarian, Russian and German summaries).

CERAMBYCIDAE

- Kantardjiewa-Minkowa, S. (1934) Die Arten der Familie Cerambycidae (Col.). II. (Lamiinae). *Mitteilungen der Bulgarischen Entomologischen Gesellschaft in Sofia*, 8: 132–144 (In Bulgarian, German summary).
- Kantardjiewa-Minkowa, S. (1932) Die Arten der Familie Cerambycidae (Col.). I. (Prioninae und Cerambycinae). *Mitteilungen der Bulgarischen Entomologischen Gesellschaft in Sofia*, 7: 78–99 (In Bulgarian, German title).
- Migliaccio, E., Georgiev, G. & Gashtarov, V. (2007) An annotated list of Bulgarian Cerambycids with special view on the rarest species and endemics (Coleoptera: Cerambycidae). *Lambillionea*, 107 (1), Supplément 1: 1–78.
- Minkova, S. (1961) Untersuchungen über die Artenzusammensetzung der Tribus Dorcadionini (Col. Cerambycidae) in Bulgarien. *Bulletin de l'Institut de Zoologie et musée* 10: 293–309 (in Bulgarian, Russian and German summaries).
- Nedelkov, N. (1905) Prinosa kam entomologichnata fauna na Balgaria (Contribution to the entomological fauna of Bulgaria). *Periodichesko Spisanie na Bulgarskoto Knizhovno Družestvo v Sofia (Periodical Journal of the Bulgarian Literary Society in Sofia)*, 66: 404–439 (In Bulgarian).
- Nedelkov, N. (1909a) Peti prinosa kam entomologichnata fauna na Balgaria (Fifth contribution to the fauna of insects of Bulgaria). *Sbomik za Narodni Umotvorenia, Nauka i Knizhnina (Collection of Folklore, Science and Literature)*, 25, 3–37 (In Bulgarian).
- Nedelkov, N. (1909b) Nashata entomologichna fauna (Our entomological fauna). *Arhiv na Ministerstvoto na Narodnoto Prosveshthenie (Archives of the Ministry of Education)*, 1 (3): 83–135 (in Bulgarian).
- Netolitzky, F. (1912) Eine Sammelreise nach Bulgarien. *Koleopterologische Rundschau*, 1 (10): 137–143, 156–161.
- Rapuzzi, P. (1995) Descrizione di *Stenurella samai* n. sp. di Turchia europea e di *Axinopalpis gracilis christinae* n. ssp. di Grecia (Coleoptera, Cerambycidae). *Lambillionea*, 95 (4): 617–619.
- Rapuzzi, P. & Georgiev, G. (2007) Contribution to the Knowledge of Species Composition and Regional Distribution of Longhorn Beetles (Coleoptera: Cerambycidae) in Bulgaria. *Acta Zoologica Bulgarica*, 59 (3): 253–266.
- Rapuzzi, P. & Sama, G. (2012) New taxa and new records of longhorn-beetles from Eastern Mediterranean region (Coleoptera: Cerambycidae). *Munis Entomology & Zoology*, 7 (2): 663–689.
- Simandl, J. (2002) New and interesting records of beetles (Coleoptera) from Bulgaria. *Acta Zoologica Bulgarica*, 54 (2): 59–65.
- Wallin, H., Nylander, U. & Kvamme, T. (2009) Two sibling species of *Leiopus* Audinet-Serville, 1835 (Coleoptera: Cerambycidae) from Europe: *L. nebulosus* (Linnaeus, 1758) and *L. linnei* sp. nov. *Zootaxa*, 2010 (1): 31–45.